



TUBULAR CABLE LUGS & CONNECTORS
Cu, Ni, Steel, Al, Al/Cu

intercable

	standard	page	
Cu		40	
		43	
	FLEXIBLE cable class 5/6		46
			47
			49
		DIN 46235	50
			53
			54
			56
	FLEXIBLE cable class 5/6		58
			60
		DIN 46235	62
			64
			65
			66
		67	
FLEXIBLE cable class 5/6		68	
FLEXIBLE cable class 5/6		69	

	standard	page		
Cu			70	
			71	
	FLEXIBLE cable class 5/6		72	
		DIN 46341	73	
		DIN 46267	74	
		"T" and Oval		75
			76	
			76	
			77	
			77	
			79	
			79	
			79	
			79	

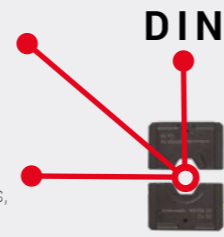
Ni 500°C

Stainless Steel 400°C

THE DIMENSIONS OF THE TUBE / PIPE OF THE CONNECTORS

Intercable company standard dimensions, **I-series** known as used commonly by ITALIAN colleagues, very cost-efficient and high quality solution fits perfectly for most connection processes.

Intercable company standard dimensions, known as used commonly by GERMAN colleagues, known as **R-series** or **F-series** (flexible), the same dimensions are used by our Weitkowitz EURO-series, mostly industrial high quality solution fits perfectly for most connection processes.



DIN

The dimensions are according to the DIN standards, or followed by the DIN guideline dimensions.

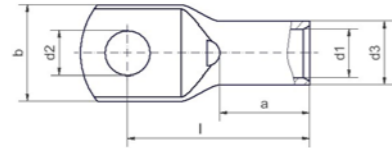
THE CRIMPING DIES AND THE CONNECTOR MUST WORK TOGETHER
The dimensions of the crimping dies must fit to the dimensions of the connectors!
SELECT THE RIGHT COMBINATION FROM THE SAME STANDARD!

	standard	page		
Cu MEDIUM VOLTAGE		80		
		80		
		80		
		80		
		80		
Al - Cu LOW - MEDIUM VOLTAGE		DIN 46329	82	
		DIN 46329	83	
			84	
		DIN 46329 and „ENEL“ specs.	84	
			84	
			84	
		pin connection	DIN 46267 and „ENEL“ specs.	87
		connection and reduction	DIN 46267 and „ENEL“ specs.	89
			89	
		full tension		94

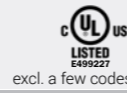
	standard	page
Cu, Brass		95
		95
		96
		96
		97
		97
		Cu end-pin DIN 46235



Cu - Intercable IT standard



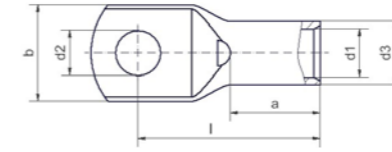
Cu-HCP 99,9% / Copper tinned
DIN EN 13600



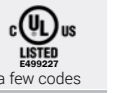
excl. a few codes

mm ²	Ø mm	Art. N. (inspect. hole: yes)	Art. N. (inspect. hole: no)	d1	d3	d2	b	l	a	Pack
1-1,5	3		CI1.5-M3	1,9	3,9	3,2	6,5	14,0	6,0	50
	4		CI1.5-M4			4,3	8,5	15,0		50
	5		CI1.5-M5			5,3	10,0	16,0		50
	6		CI1.5-M6			6,4	11,0	18,0		50
2,5	4		CI2.5-M4	2,4	4,4	4,3	8,5	15,0	6,5	50
	5		CI2.5-M5			5,3	10,0	16,0		50
	6		CI2.5-M6			6,4	11,0	18,0		50
4	8		CI2.5-M8			8,4	13,0	20,0		50
	4		CI4-M4	3,0	5,0	4,3	8,5	17,0	8,0	50
	5		CI4-M5			5,3	10,0	18,0		50
	6		CI4-M6			6,4	11,0	20,0		50
6	8		CI4-M8			8,4	14,0	22,0		50
	4		CI6-M4	3,7	5,5	4,3	8,5	17,5	8,0	50
	5		CI6-M5			5,3	10,0	19,0		50
	6		CI6-M6			6,4	11,0	21,0		50
10	8		CI6-M8			8,4	14,0	23,0		50
	10		CI6-M10			10,5	15,0	25,5		50
	4	CI10-M4	ICS104	4,3	6,7	4,3	10,0	19,5	10,0	50
	5	CI10-M5	ICS105			5,3	10,0	20,5		50
16	6	CI10-M6	ICS106			6,4	11,0	22,5		50
	8	CI10-M8	ICS108			8,4	15,0	25,0		50
	10	CI10-M10	ICS1010			10,5	18,0	27,5		50
	12	CI10-M12	ICS1012			13,0	19,0	28,5		50
25	5	CI16-M5	ICS165	5,4	7,8	5,3	12,0	22,5	11,0	50
	6	CI16-M6	ICS166			6,4	12,0	24,5		50
	8	CI16-M8	ICS168			8,4	15,0	26,5		50
	10	CI16-M10	ICS1610			10,5	18,0	29,0		50
35	12	CI16-M12	ICS1612			13,0	20,0	30,0		50
	5	CI25-M5	ICS255	6,9	9,4	5,3	14,0	25,0	13,0	50
	6	CI25-M6	ICS256			6,4	14,0	27,0		50
	8	CI25-M8	ICS258			8,4	15,0	29,0		50
50	10	CI25-M10	ICS2510			10,5	18,0	31,5		50
	12	CI25-M12	ICS2512			13,0	20,0	32,5		50
	14	CI25-M14	ICS2514			15,0	22,0	34,5		50
	5	CI35-M5	ICS355	8,3	11,3	5,3	16,5	32,5	16,0	25
	6	CI35-M6	ICS356			6,4	16,5	32,5		25
	8	CI35-M8	ICS358			8,4	16,5	33,0		25
	10	CI35-M10	ICS3510			10,5	18,0	35,5		25
	12	CI35-M12	ICS3512			13,0	20,0	36,5		25
70	14	CI35-M14	ICS3514			15,0	22,0	39,0		25
	16	CI35-M16	ICS3516			17,0	26,0	41,5		25

Cu - Intercable IT standard



Cu-HCP 99,9% / Copper tinned
DIN EN 13600



excl. a few codes

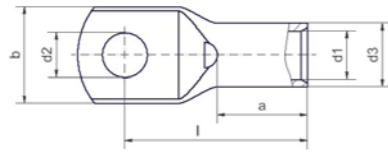
mm ²	Ø mm	Art. N. (inspect. hole: yes)	Art. N. (inspect. hole: no)	d1	d3	d2	b	l	a	Pack
50	6	CI50-M6	ICS506	9,6	13,1	6,4	19,0	36,0	18,0	25
	8	CI50-M8	ICS508			8,4	19,0	37,0		25
	10	CI50-M10	ICS5010			10,5	20,0	39,0		25
	12	CI50-M12	ICS5012			13,0	23,0	40,5		25
70	14	CI50-M14	ICS5014			15,0	25,0	42,5		25
	16	CI50-M16	ICS5016			17,0	27,0	45,5		25
	20	CI50-M20	ICS5020			21,0	28,0	50,0		25
	6	CI70-M6	CI70-M6W	11,3	14,7	6,4	22,5	41,0	21,0	25
95	8	CI70-M8	CI70-M8W			8,4	22,5	41,0		25
	10	CI70-M10	CI70-M10W			10,5	22,5	42,5		25
	12	CI70-M12	CI70-M12W			13,0	23,0	43,5		25
	14	CI70-M14	CI70-M14W			15,0	26,0	46,0		25
120	16	CI70-M16	CI70-M16W			17,0	28,0	48,5		25
	6	CI95-M6	ICS956	13,5	17,5	6,4	25,0	46,0	23,0	25
	8	CI95-M8	ICS958			8,4	25,0	45,5		25
	10	CI95-M10	ICS9510			10,5	25,0	47,0		25
150	12	CI95-M12	ICS9512			13,0	26,0	47,0		25
	14	CI95-M14	ICS9514			15,0	26,0	49,0		25
	16	CI95-M16	ICS9516			17,0	28,0	50,0		25
	20	CI95-M20	ICS9520			21,0	31,0	54,5		25
185	8	CI120-M8	ICS1208	15,5	20,0	8,4	29,0	50,5	26,0	25
	10	CI120-M10	ICS12010			10,5	29,0	53,0		25
	12	CI120-M12	ICS12012			13,0	29,0	52,5		25
	14	CI120-M14	ICS12014			15,0	29,0	53,5		25
250	16	CI120-M16	ICS12016			17,0	29,0	55,0		25
	20	CI120-M20	ICS12020			21,0	35,0	60,0		25
	8	CI150-M8	ICS1508	16,8	21,3	8,4	31,0	55,5	29,0	10
	10	CI150-M10	ICS15010			10,5	31,0	56,5		10
350	12	CI150-M12	ICS15012			13,0	31,0	56,0		10
	14	CI150-M14	ICS15014			15,0	31,0	57,0		10
	16	CI150-M16	ICS15016			17,0	31,0	58,0		10
	20	CI150-M20	ICS15020			21,0	35,0	63,0		10
500	8	CI185-M8	ICS1858	19,0	24,0	8,4	35,0	58,0	30,0	10
	10	CI185-M10	ICS18510			10,5	35,0	59,0		10
	12	CI185-M12	ICS18512			13,0	35,0	58,5		10
	14	CI185-M14	ICS18514			15,0	35,0	61,0		10
630	16	CI185-M16	ICS18516			17,0	35,0	63,0		10
	20	CI185-M20	ICS18520			21,0	35,0	66,0		10

typically used tools: „GENERAL CATALOG TOOLS“

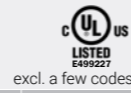


! standard: I-series

Cu - Intercable IT standard



Cu-HCP 99,9% / Copper tinned
DIN EN 13600




excl. a few codes

mm ²	Ø mm	Art. N. (inspect. hole: yes)	Art. N. (inspect. hole: no)	mm						kg (/100)	Pack
				d1	d3	d2	b	l	a		
240	8	CI240-M8	CI240-M8W	21,1	27,3	8,4	39,0	69,0	35,0	10	
	10	CI240-M10	CI240-M10W			10,5	39,0	69,0	35,0	10	
	12	CI240-M12	CI240-M12W			13,0	39,0	69,0	35,0	10	
	14	CI240-M14	CI240-M14W			15,0	39,0	71,0	35,0	10	
	16	CI240-M16	CI240-M16W			17,0	39,0	71,5	35,0	10	
300	20	CI240-M20	CI240-M20W	21,0	39,0	73,0	35,0	10			
	10	CI300-M10	ICS30010	24,0	30,0	10,5	44,0	79,5	42,0	5	
	12	CI300-M12	ICS30012			13,0	44,0	82,0		5	
	14	CI300-M14	ICS30014			15,0	44,0	84,0		5	
400	16	CI300-M16	ICS30016			17,0	44,0	85,0		5	
	20	CI300-M20	ICS30020			21,0	44,0	85,0		5	
	10	CI400-M10	CI400-M10W	27,0	35,0	10,5	51,0	94,0	42,0	5	
	12	CI400-M12	CI400-M12W			13,0	51,0	94,0		5	
500	14	CI400-M14	CI400-M14W			15,0	51,0	94,0		5	
	16	CI400-M16	CI400-M16W			17,0	51,0	94,0		5	
	20	CI400-M20	CI400-M20W			21,0	51,0	94,0		5	
	12	CI500-M12	ICS50012	31,0	38,0	13,0	55,5	113,0	70,0	5	
630	16	CI500-M16	ICS50016			17,0	55,5	113,0		5	
	20	CI500-M20	ICS50020			21,0	55,5	113,0		5	
630	16	CI630-M16	ICS63016	34,0	41,0	17,0	61,0	131,0	70,0	5	
	20	CI630-M20	ICS63020			21,0	61,0	131,0		5	

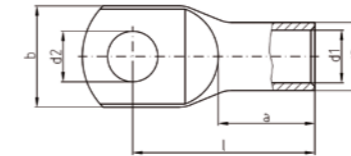
typically used tools: „GENERAL CATALOG TOOLS“



 ! standard: I-series

page: 139-141 hydraulic tool selection: page: 144 crimping dies: page: 163-184

Cu - Intercable D standard „R-series“



Cu-HCP 99,9% / Copper tinned
DIN EN 13600




exc.: *

mm ²	Ø mm	Art. N. (inspect. hole: yes)	Art. N. (inspect. hole: no)	mm						kg (/100)	Pack
				d1	d3	d2	b	l	a		
0,5-0,75	3		ICR0753*	1,4	3	3,2	6,5	12,5	6	0,07	50
	4		ICR0754*			4,3	8,5	14		0,08	50
	5		ICR0755*			5,3	10	15		0,10	50
1,0-1,5	3		ICR13*	1,9	3,9	3,2	6,5	14	6	0,13	50
	4		ICR14*			4,3	8,5	15		0,14	50
	5		ICR15*			5,3	10	16		0,15	50
2,5	6		ICR16*			6,4	11	18		0,17	50
	4		ICR24*	2,4	4,4	4,3	8,5	15	6,5	0,16	50
	5		ICR25*			5,3	10	16		0,18	50
4	6		ICR26*			6,4	11	18		0,20	50
	8		ICR28*			8,4	13	20		0,23	50
	4		ICR44*	3	5	4,3	8,5	17	8	0,22	50
6	5		ICR45*			5,3	10	18		0,24	50
	6		ICR46*			6,4	11	20		0,26	50
	8		ICR48*			8,4	14	22		0,30	50
	4	ICR64SL	ICR64	3,5	6,5	4,3	10	19	9	0,49	50
	5	ICR65SL	ICR65			5,3	10	20		0,47	50
	6	ICR66SL	ICR66			6,4	11	21,5		0,54	50
	8	ICR68SL	ICR68			8,4	15	24		0,60	50
	10	ICR610SL	ICR610			10,5	18	26		0,64	50
10	12	ICR612SL	ICR612			13	20	27,5		0,64	50
	4	ICR104SL	ICR104	4,5	7	4,3	12	20	10	0,43	50
	5	ICR105SL	ICR105			5,3	12	21		0,49	50
	6	ICR106SL	ICR106			6,4	12	22,5		0,51	50
16	8	ICR108SL	ICR108			8,4	15	25		0,60	50
	10	ICR1010SL	ICR1010			10,5	18	27		0,63	50
	12	ICR1012SL	ICR1012			13	20	28,5		0,64	50
	4	ICR164SL	ICR164	5,5	8,5	4,3	12	24	13	0,82	50
	5	ICR165SL	ICR165			5,3	12	25		0,88	50
	6	ICR166SL	ICR166			6,4	12	26,5		0,96	50
	8	ICR168SL	ICR168			8,4	15	29		1,04	50
	10	ICR1610SL	ICR1610			10,5	18	31		1,10	50
12	ICR1612SL	ICR1612			13	19	32		1,13	50	

typically used tools: „GENERAL CATALOG TOOLS“

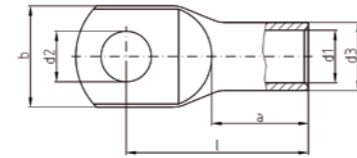


 ! standard: R-series

page: 137-141 hydraulic tool selection: page: 144 crimping dies: page: 163-184



Cu - Intercable D standard „R-series“



Cu-HCP 99,9% / Copper tinned
DIN EN 13600



mm ²	Ø mm	Art. N. (inspect. hole: yes)	Art. N. (inspect. hole: no)	mm						kg (/100)	Pack
				d1	d3	d2	b	l	a		
25	5	ICR255SL	ICR255	7	10	5,3	15	33,5	15	1,38	50
	6	ICR256SL	ICR256			6,4	15	31,5		1,31	50
	8	ICR258SL	ICR258			8,4	16	33		1,30	50
	10	ICR2510SL	ICR2510			10,5	18	34,5		1,51	50
	12	ICR2512SL	ICR2512			13	20	36		1,55	50
	14	ICR2514SL	ICR2514			15	22	39		1,74	50
	16	ICR2516SL	ICR2516			17	26	42		1,62	50
35	6	ICR356SL	ICR356	8,5	12	6,4	17	33	17	2,11	25
	8	ICR358SL	ICR358			8,4	17	34		2,18	25
	10	ICR3510SL	ICR3510			10,5	20	36,5		2,27	25
	12	ICR3512SL	ICR3512			13	22	37,5		2,33	25
	14	ICR3514SL	ICR3514			15	23	40		2,44	25
	16	ICR3516SL	ICR3516			17	28	44		2,60	25
50	6	ICR506SL	ICR506	10	14	6,4	20	37	19	3,02	25
	8	ICR508SL	ICR508			8,4	20	39		3,04	25
	10	ICR5010SL	ICR5010			10,5	20	40,5		3,17	25
	12	ICR5012SL	ICR5012			13	23	42		3,26	25
	14	ICR5014SL	ICR5014			15	23	44		3,41	25
	16	ICR5016SL	ICR5016			17	27	46		3,64	25
	20	ICR5020SL	ICR5020			21	30,5	52,5		3,89	25
70	6	ICR706SL	ICR706	12	16,5	6,4	24	40,5	21	4,12	25
	8	ICR708SL	ICR708			8,4	24	42,5		4,50	25
	10	ICR7010SL	ICR7010			10,5	24	43,5		4,78	25
	12	ICR7012SL	ICR7012			13	24	45		4,64	25
	14	ICR7014SL	ICR7014			15	25	46		4,95	25
	16	ICR7016SL	ICR7016			17	28	48,5		5,19	25
95	6	ICR956SL	ICR956	13,5	18	6,4	26	43	23	5,57	25
	8	ICR958SL	ICR958			8,4	26	46		5,50	25
	10	ICR9510SL	ICR9510			10,5	26	47		5,51	25
	12	ICR9512SL	ICR9512			13	26	48		5,54	25
	14	ICR9514SL	ICR9514			15	26	51,5		5,99	25
	16	ICR9516SL	ICR9516			17	28	51		5,97	25
20	ICR9520SL	ICR9520			21	30	55		6,13	25	

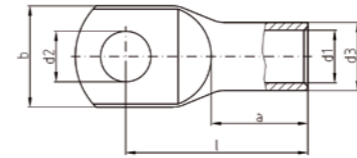
typically used tools: „GENERAL CATALOG TOOLS“



! standard: R-series
crimping dies: page: 163-184



Cu - Intercable D standard „R-series“



Cu-HCP 99,9% / Copper tinned
DIN EN 13600

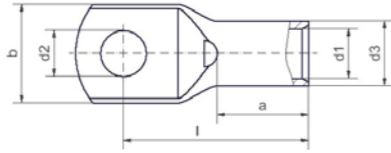
mm ²	Ø mm	Art. N. (inspect. hole: yes)	Art. N. (inspect. hole: no)	mm						kg (/100)	Pack
				d1	d3	d2	b	l	a		
120	8	ICR1208SL	ICR1208	15	20	8,4	29	49,5	26	6,88	25
	10	ICR12010SL	ICR12010			10,5	29	52		8,39	25
	12	ICR12012SL	ICR12012			13	29	51,5		7,85	25
	14	ICR12014SL	ICR12014			15	30	53		8,14	25
	16	ICR12016SL	ICR12016			17	30	55		8,50	25
	20	ICR12020SL	ICR12020			21	35	60		8,90	25
	150	8	ICR1508SL	ICR1508	16,8	21,3	8,4	31	55,5	29	8,34
	10	ICR15010SL	ICR15010			10,5	31	56,5		8,34	10
	12	ICR15012SL	ICR15012			13	31	56		8,14	10
	14	ICR15014SL	ICR15014			15	31	57		8,12	10
	16	ICR15016SL	ICR15016			17	31	58		8,50	10
	20	ICR15020SL	ICR15020			21	35	63		8,84	10
185	8	ICR1858SL*	ICR1858*	19	24	8,4	35	58	30	10,61	10
	10	ICR18510SL	ICR18510			10,5	35	59		10,93	10
	12	ICR18512SL	ICR18512			13	35	58,5		10,79	10
	14	ICR18514SL	ICR18514			15	35	61		10,72	10
	16	ICR18516SL	ICR18516			17	35	63		10,86	10
	20	ICR18520SL	ICR18520			21	35	66		11,33	10
240	8	ICR2408SL*	ICR2408*	21	26	8,4	38	67	35	12,40	10
	10	ICR24010SL	ICR24010			10,5	38	67		12,99	10
	12	ICR24012SL	ICR24012			13	38	67		13,02	10
	14	ICR24014SL	ICR24014			15	38	69		13,96	10
	16	ICR24016SL	ICR24016			17	38	69,5		13,88	10
	20	ICR24020SL	ICR24020			21	38	71		13,95	10
300	10	ICR30010SL*	ICR30010*	24	30	10,5	44	79,5	42	20,45	5
	12	ICR30012SL	ICR30012			13	44	82		21,72	5
	14	ICR30014SL	ICR30014			15	44	84		22,47	5
	16	ICR30016SL	ICR30016			17	44	85		21,94	5
	20	ICR30020SL	ICR30020			21	44	85		22,92	5
400	10	ICR40010SL	ICR40010	27,5	33,5	10,5	49	92	47	27,90	5
	12	ICR40012SL	ICR40012			13	49	92		29,80	5
	16	ICR40016SL	ICR40016			17	49	92		27,90	5
	20	ICR40020SL	ICR40020			21	49	92		26,61	5

typically used tools: „GENERAL CATALOG TOOLS“



! standard: R-series
crimping dies: page: 163-184

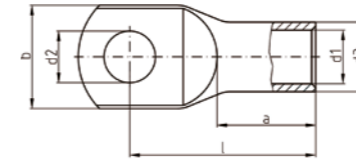
Cu - Intercable IT standard / for flexible cable class 5/6



Cu-HCP 99,9% / Copper tinned
DIN EN 13600

mm ²	Ø mm	Art. N. (inspect. hole: yes)	d1	d3	d2	b	l	a	Pack
	6	CI35-M6-SF			6,4	16,5	32,5		25
	8	CI35-M8-SF			8,4	16,5	33,0		25
	10	CI35-M10-SF			10,5	18,0	35,5		25
	12	CI35-M12-SF			13,0	20,0	36,5		25
	14	CI35-M14-SF			15,0	22,0	39,0		25
	16	CI35-M16-SF			17,0	26,0	41,5		25
50	6	CI50-M6-SF	11,0	13,6	6,4	19,0	36,0	18,0	25
	8	CI50-M8-SF			8,4	19,0	37,0		25
	10	CI50-M10-SF			10,5	20,0	39,0		25
	12	CI50-M12-SF			13,0	23,0	40,5		25
	14	CI50-M14-SF			15,0	25,0	42,5		25
	16	CI50-M16-SF			17,0	27,0	45,5		25
	20	CI50-M20-SF			21,0	28,0	50,0		25
70	6	CI70-M6-SF	13,0	16,0	6,4	22,5	41,0	21,0	25
	8	CI70-M8-SF			8,4	22,5	41,0		25
	10	CI70-M10-SF			10,5	22,5	42,5		25
	12	CI70-M12-SF			13,0	23,0	43,5		25
	14	CI70-M14-SF			15,0	26,0	46,0		25
	16	CI70-M16-SF			17,0	28,0	48,5		25
95	6	CI95-M6-SF	15,0	18,8	6,4	25,0	46,0	23,0	25
	8	CI95-M8-SF			8,4	25,0	45,5		25
	10	CI95-M10-SF			10,5	25,0	47,0		25
	12	CI95-M12-SF			13,0	26,0	47,0		25
	14	CI95-M14-SF			15,0	26,0	49,0		25
	16	CI95-M16-SF			17,0	28,0	50,0		25
	20	CI95-M20-SF			21,0	31,0	54,5		25
120	8	CI120-M8-SF	16,8	21,3	8,4	31,0	55,5	29,0	25
	10	CI120-M10-SF			10,5	31,0	56,5		25
	12	CI120-M12-SF			13,0	31,0	56,0		25
	14	CI120-M14-SF			15,0	31,0	57,0		25
	16	CI120-M16-SF			17,0	31,0	58,0		25
	20	CI120-M20-SF			21,0	35,0	63,0		25
150	8	CI150-M8-SF	19,0	24,0	8,4	35,0	58,0	30,0	25
	10	CI150-M10-SF			10,5	35,0	59,0		25
	12	CI150-M12-SF			13,0	35,0	58,5		25
	14	CI150-M14-SF			15,0	35,0	61,0		25
	16	CI150-M16-SF			17,0	35,0	63,0		25
	20	CI150-M20-SF			21,0	35,0	66,0		25
185	8	CI185-M8-SF	21,1	27,3	8,4	39,0	69,0	35,0	25
	10	CI185-M10-SF			10,5	39,0	69,0		25
	12	CI185-M12-SF			13,0	39,0	69,0		25
	14	CI185-M14-SF			15,0	39,0	71,0		25
	16	CI185-M16-SF			17,0	39,0	71,5		25
	20	CI185-M20-SF			21,0	39,0	73,0		25

Cu - Intercable D standard / for flexible cable class 5/6 „F-series“



Cu-HCP 99,9% / Copper tinned
DIN EN 13600



mm ²	cable min. Ø mm	Ø mm	Art. N. (inspect. hole: no)	mm						kg (/100)	Pack
				d1	d3	d2	b	l	a		
10	4,0	5	ICF105	5	8	5,3	12	23	12	0,70	50
		6	ICF106			6,4	12	25		0,76	50
		8	ICF108			8,4	15	28		0,91	50
		10	ICF1010			10,5	18	31		0,98	50
16	5,0	12	ICF1012			13	20	32		1,00	50
		5	ICF165	6	9	5,3	14	25,5	13	0,94	50
		6	ICF166			6,4	14	27		1,01	50
		8	ICF168			8,4	15	29,5		1,13	50
25	6,5	10	ICF1610			10,5	18	32		1,14	50
		12	ICF1612			13	20	33		1,19	50
		6	ICF256	7,7	10,7	6,4	16	32	16	1,51	50
		8	ICF258			8,4	16	34		1,50	50
35	7,8	10	ICF2510			10,5	18	35		1,56	50
		12	ICF2512			13	20	36		1,65	50
		6	ICF356	9,2	12,4	6,4	18	36	18	2,10	25
		8	ICF358			8,4	18	36		2,13	25
50	9,0	10	ICF3510			10,5	18	38		2,14	25
		12	ICF3512			13	23	40		2,22	25
		16	ICF3516			17	26	45		2,21	25
		6	ICF506	11,2	14,8	6,4	22	42	21	3,20	25
70	11,0	8	ICF508			8,4	22	42		3,22	25
		10	ICF5010			10,5	22	43		3,36	25
		12	ICF5012			13	23	44		3,38	25
		16	ICF5016			17	28	48,5		3,69	25
150	13,5	6	ICF706	13,5	17,5	6,4	25	46	23	4,43	25
		8	ICF708			8,4	25	45,5		4,85	25
		10	ICF7010			10,5	25	47		5,00	25
		12	ICF7012			13	26	47		4,91	25
185	16	16	ICF7016			17	28	50		5,15	25
		20	ICF7020			21	31	54,5		5,52	25

typically used tools: „GENERAL CATALOG TOOLS“

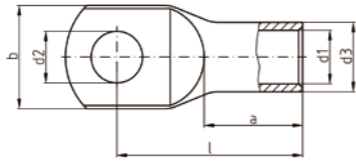


page: 137-141 hydraulic tool selection: page: 144

! standard: I-series flexible

crimping dies: page: 163-184

Cu - Intercable D standard / for flexible cable class 5/6 „F-series“




Cu-HCP 99,9% / Copper tinned
DIN EN 13600



mm ²	cable min. Ø mm	Ø mm	Art. N. (inspect. hole: no)	mm						kg (/100)	Pack
				d1	d3	d2	b	l	a		
95	13,0	6	ICF956	15,5	20	6,4	29	50,5	26	6,50	25
		8	ICF958			8,4	29	50,5		6,93	25
		10	ICF9510			10,5	29	53		7,50	25
		12	ICF9512			13	29	52,5		7,08	25
		16	ICF9516			17	29	55		7,29	25
120	15,0	20	ICF9520			21	35	60		7,61	25
		10	ICF12010	16,8	21,3	10,5	31	56,5	29	8,19	25
		12	ICF12012			13	31	56		8,07	25
		16	ICF12016			17	31	58		8,36	25
150	16,3	20	ICF12020			21	35	63		8,75	25
		10	ICF15010	19	24	10,5	35	59	30	10,40	10
		12	ICF15012			13	35	58,5		10,70	10
185	18,5	16	ICF15016			17	35	63		11,11	10
		20	ICF15020			21	35	66		11,96	10
		10	ICF18510	21	26	10,5	38	67	35	13,59	10
		12	ICF18512			13	38	67		12,48	10
240	20,5	16	ICF18516			17	38	69,5		12,88	10
		20	ICF18520			21	38	71		13,95	10
		12	ICF24012	24	30	13	44	82	42	21,72	10
		16	ICF24016			17	44	85		21,94	10
300	23,5	20	ICF24020			21	44	85		22,92	10
		12	ICF30012	27,5	33,5	13	49	92	47	29,80	5
		16	ICF30016			17	49	92		27,50	5
		20	ICF30020			21	49	92		26,61	5

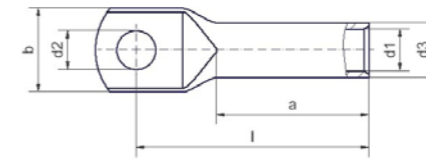
typically used tools: „GENERAL CATALOG TOOLS“



 ! standard: F-series

page: 137-141 hydraulic tool selection: page: 144 crimping dies: page: 163-184

Cu - Intercable IT standard / LONG




Cu-HCP 99,9% / Copper tinned
DIN EN 13600

mm ²	Ø mm	Art. N. (inspect. hole: no)	d1	d3	d2	b	l	a	Pack
16	8	CI16-M8-CL	5,4	7,8	8,4	15,0	37,5	22,0	50
25	8	CI25-M8-CL	6,9	9,4	8,4	15,0	43,0	27,0	50
	10	CI25-M10-CL			10,5	18,0	45,5		50
35	8	CI35-M8-CL	8,3	11,3	8,4	16,5	45,0	28,0	50
	10	CI35-M10-CL			10,5	18,0	47,5		25
50	8	CI50-M8-CL	9,6	13,1	8,4	19,0	54,0	35,0	25
	10	CI50-M10-CL			10,5	20,0	56,0		25
70	12	CI50-M12-CL			13,0	23,0	57,5		25
	10	CI70-M10-CL	11,3	14,7	10,5	22,5	62,5	41,0	25
	12	CI70-M12-CL			13,0	23,0	63,5		25
95	14	CI70-M14-CL			15,0	26,0	66,0		25
	16	CI70-M16-CL			17,0	28,0	68,5		25
	10	CI95-M10-CL	13,5	17,5	10,5	25,0	68,0	44,0	25
120	12	CI95-M12-CL			13,0	26,0	68,0		25
	14	CI95-M14-CL			15,0	26,0	70,0		25
	16	CI95-M16-CL			17,0	28,0	71,0		25
150	10	CI120-M10-CL	15,5	20,0	10,5	29,0	77,0	50,0	25
	12	CI120-M12-CL			13,0	29,0	76,5		25
	14	CI120-M14-CL			15,0	29,0	77,5		25
	16	CI120-M16-CL			17,0	29,0	79,0		25
185	12	CI150-M12-CL	16,8	21,3	13,0	31,0	78,0	51,0	10
	14	CI150-M14-CL			15,0	31,0	79,0		10
	16	CI150-M16-CL			17,0	31,0	80,0		10
240	20	CI150-M20-CL			21,0	35,0	85,0		10
	14	CI185-M14-CL	19,0	24,0	15,0	35,0	86,0	55,0	10
	16	CI185-M16-CL			17,0	35,0	88,0		10
300	20	CI185-M20-CL			21,0	35,0	91,0		10
	14	CI240-M14-CL	21,1	27,3	15,0	39,0	94,0	58,0	10
	16	CI240-M16-CL			17,0	39,0	94,5		10
400	20	CI240-M20-CL			21,0	39,0	96,0		10
	16	CI300-M16-CL	24,0	30,0	17,0	44,0	103,0	60,0	5
	16	CI400-M16-CL	27,0	35,0	17,0	51,0	114,0	62,0	5

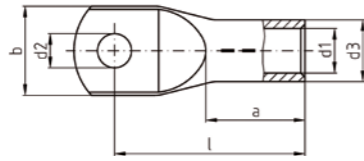
typically used tools: „GENERAL CATALOG TOOLS“



 ! standard: I-series

page: 137-141 hydraulic tool selection: page: 144 crimping dies: page: 163-184

Cu - DIN 46235 standard



Cu-HCP 99,9% / Copper tinned
DIN EN 13600
option: blank (no tin): ICDxyBK

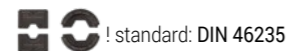
DIN 46235
(exc.: * only pipe acc. DIN, no DIN description)

mm ²	Ø mm	Art. N. (inspect. hole: no)	Reference	mm						kg (/100)	Pack	Art. N. (blank)
				d1	d3	d2	b	l	a			
6	5	ICD65	5	3,7	5,5	5,3	8,5	24	10	0,31	50	ICD65BK
	6	ICD66				6,4	9	24		0,34	50	ICD66BK
	8	ICD68*				8,4	13	26		0,35	50	ICD68BK*
10	5	ICD105	6	4,4	6	5,3	10	27	10	0,35	50	ICD105BK
	6	ICD106				6,4	10	27		0,37	50	ICD106BK
	8	ICD108*				8,4	13	28		0,38	50	ICD108BK*
	10	ICD1010*				10,5	15	29		0,38	50	ICD1010BK*
16	5	ICD165*	8	5,5	8,5	5,3	13	36	20	1,22	50	ICD165BK*
	6	ICD166				6,4	13	36		1,27	50	ICD166BK
	8	ICD168				8,4	13	37		1,30	50	ICD168BK
	10	ICD1610				10,5	16,5	38		1,34	50	ICD1610BK
	12	ICD1612*				13	19	40		1,36	50	ICD1612BK*
25	6	ICD256	10	7	10	6,4	14	39	20	1,62	50	ICD256BK
	8	ICD258				8,4	17	39		1,76	50	ICD258BK
	10	ICD2510				10,5	17	40,5		1,80	50	ICD2510BK
	12	ICD2512				13	18	40,5		1,73	50	ICD2512BK
	16	ICD2516*				17	22	45		1,99	50	ICD2516BK*
35	6	ICD356*	12	8,2	12,5	6,4	17,5	42,5	20	3,12	25	ICD356BK*
	8	ICD358				8,4	18	42		3,24	25	ICD358BK
	10	ICD3510				10,5	20	42,5		3,19	25	ICD3510BK
	12	ICD3512				13	21	44		3,17	25	ICD3512BK
	16	ICD3516*				17	28	47		3,14	25	ICD3516BK*
50	6	ICD506*	14	9,8	14,5	6,4	20	52	28	4,60	25	ICD506BK*
	8	ICD508				8,4	20	52		4,95	25	ICD508BK
	10	ICD5010				10,5	22	52		4,74	25	ICD5010BK
	12	ICD5012				13	24	52		4,72	25	ICD5012BK
	14	ICD5014*				15	26	53,5		4,84	25	ICD5014BK*
	16	ICD5016				17	28	55,5		5,00	25	ICD5016BK

typically used tools: „GENERAL CATALOG TOOLS“



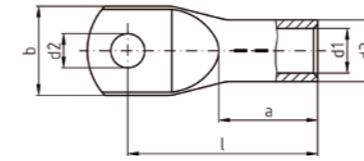
page: 137-141 hydraulic tool selection: page: 144



! standard: DIN 46235

crimping dies: page: 163-184

Cu - DIN 46235 standard



Cu-HCP 99,9% / Copper tinned
DIN EN 13600
option: blank (no tin): ICDxyBK

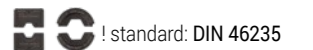
DIN 46235
(exc.: * only pipe acc. DIN, no DIN description)

mm ²	Ø mm	Art. N. (inspect. hole: no)	Reference	mm						kg (/100)	Pack	Art. N. (blank)
				d1	d3	d2	b	l	a			
70	8	ICD708	16	11,3	16,5	8,4	24	56	28	6,54	25	ICD708BK
	10	ICD7010				10,5	24	56		6,54	25	ICD7010BK
	12	ICD7012				13	24	56,5		6,49	25	ICD7012BK
	14	ICD7014*				15	24	55,5		6,41	25	ICD7014BK*
	16	ICD7016				17	29	57		6,41	25	ICD7016BK
	20	ICD7020*				21	31	61		6,40	25	ICD7020BK*
95	8	ICD958*	18	13,5	19	8,4	28	65	35	9,36	25	ICD958BK*
	10	ICD9510				10,5	28	65,5		9,55	25	ICD9510BK
	12	ICD9512				13	28	65,5		9,45	25	ICD9512BK
	14	ICD9514*				15	28	65,5		9,20	25	ICD9514BK*
	16	ICD9516				17	30	65,5		9,44	25	ICD9516BK
	20	ICD9520*				21	33	71		9,86	25	ICD9520BK*
120	8	ICD1208*	20	15,5	21	8,4	31	70	35	11,35	25	ICD1208BK*
	10	ICD12010				10,5	31	70		11,40	25	ICD12010BK
	12	ICD12012				13	31	70,5		11,44	25	ICD12012BK
	14	ICD12014*				15	31	70		11,47	25	ICD12014BK*
	16	ICD12016				17	31,5	70		11,15	25	ICD12016BK
	20	ICD12020				21	36	72		11,51	25	ICD12020BK
150	8	ICD1508*	22	17	23,5	8,4	34	79	35	16,60	10	ICD1508BK*
	10	ICD15010				10,5	34	79		16,41	10	ICD15010BK
	12	ICD15012				13	34	78,5		16,97	10	ICD15012BK
	14	ICD15014*				15	34	78		15,66	10	ICD15014BK*
	16	ICD15016				17	34	78		16,35	10	ICD15016BK
	20	ICD15020				21	38	78		15,98	10	ICD15020BK
185	10	ICD18510	25	19	25,5	10,5	37	83	40	18,50	10	ICD18510BK
	12	ICD18512				13	37	82,5		18,95	10	ICD18512BK
	14	ICD18514*				15	37	82		18,96	10	ICD18514BK*
	16	ICD18516				17	37	82		18,78	10	ICD18516BK
	20	ICD18520				21	40	83		18,90	10	ICD18520BK

typically used tools: „GENERAL CATALOG TOOLS“



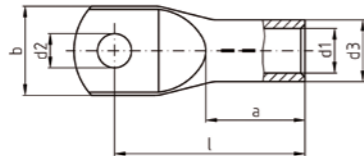
page: 138-141 hydraulic tool selection: page: 144



! standard: DIN 46235

crimping dies: page: 163-184

Cu - DIN 46235 standard



Cu-HCP 99,9% / Copper tinned
DIN EN 13600
option: blank (no tin): ICDxyBK

DIN 46235
(exc.: * only pipe acc. DIN, no DIN description)

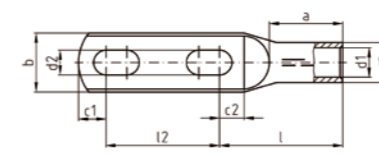
mm ²	Ø mm	Art. N. (inspect. hole: no)	Reference	mm						kg (/100)	Pack	Art. N. (blank)
				d1	d3	d2	b	l	a			
240	10	ICD24010*	28	21,5	29	10,5	42	92	40	27,48	10	ICD24010BK*
	12	ICD24012				13	42,5	92		27,08	10	ICD24012BK
	14	ICD24014*				15	42,5	92		26,40	10	ICD24014BK*
	16	ICD24016				17	42,5	92		27,63	10	ICD24016BK
	20	ICD24020				21	45	92		27,06	10	ICD24020BK
300	10	ICD30010*	32	24,5	32	10,5	48,5	104	50	34,80	5	ICD30010BK*
	12	ICD30012*				13	48,5	104		33,65	5	ICD30012BK*
	14	ICD30014*				15	48,5	104		34,60	5	ICD30014BK*
	16	ICD30016				17	48,5	100		33,72	5	ICD30016BK
	20	ICD30020				21	48,5	100		34,46	5	ICD30020BK
400	10	ICD40010*	38	27,5	38,5	10,5	55	117	70	71,55	5	ICD40010BK*
	12	ICD40012*				13	55	117		71,70	5	ICD40012BK*
	14	ICD40014*				15	55	117		71,98	5	ICD40014BK*
	16	ICD40016				17	55	117		70,28	5	ICD40016BK
	20	ICD40020				21	55	117		70,60	5	ICD40020BK
500	12	ICD50012*	42	31	42	13	60	130	70	86,92	1	ICD50012BK*
	14	ICD50014*				15	60	130		89,50	1	ICD50014BK*
	16	ICD50016*				17	60	130		89,27	1	ICD50016BK*
	20	ICD50020				21	60	130		88,14	1	ICD50020BK
625	16	ICD62516	44	34,5	44	17	63	135	80	83,35	1	ICD62516BK
	20	ICD62520				21	63	135		82,05	1	ICD62520BK
800	16	ICD80016*	52	40	52	17	75	165	100	143,00	1	ICD80016BK*
	20	ICD80020				21	75	165		145,55	1	ICD80020BK
1000	20	ICD100020	58	44	58	21	83	167	100	189,00	1	ICD100020BK

typically used tools: „GENERAL CATALOG TOOLS“



! standard: DIN 46235
crimping dies: page: 163-184

Cu - 1 cable 2 screws

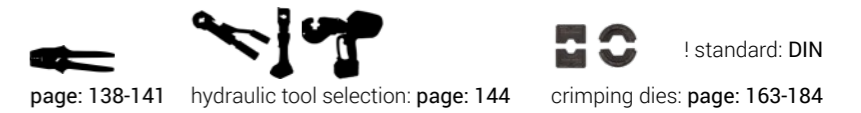


Cu-HCP 99,9% / Copper tinned
DIN EN 13600

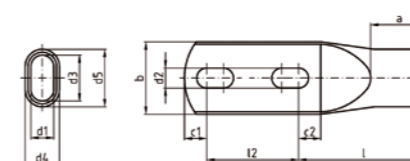
DIN 46235
(only pipe acc. DIN, no DIN description)

mm ²	Ø mm	Art. N. (inspect. hole: no)	mm								kg (/100)	Pack	
			d1	d3	d2	b	l	l2	a	c1			c2
70	2 x 12	ICD7012DL	11,3	16,5	13	24	61,5	38-60	28	14,5	14,5	10,88	5
95	2 x 12	ICD9512DL	13,5	19	13	28	63	38-60	35	14,5	15	14,30	5
120	2 x 12	ICD12012DL	15,5	21	13	31	65	38-60	35	14,5	13	16,76	5

typically used tools: „GENERAL CATALOG TOOLS“



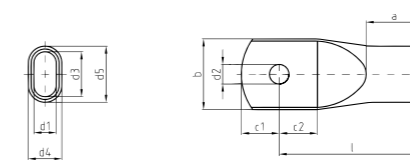
Cu - 2 cables 2 screws



Cu-HCP 99,9% / Copper tinned
DIN EN 13600

mm ²	Ø mm	Art. N. (inspect. hole: no)	mm										kg (/100)	Pack	
			d1	d3	d4	d5	d2	b	l	l2	a	c1			c2
2 x 70	2 x 12	ICD7012DDL	11,5	23,3	18	29,8	13	37	71,5	38-60	28	14,5	14,5	26,00	5
2 x 95	2 x 12	ICD9512DDL	14	26,1	22	33,6	13	42	81,5	38-60	35	14,5	14,5	41,00	5
2 x 120	2 x 12	ICD12012DDL	14,9	29,8	22,4	37,3	13	47	84,5	38-60	35	14,5	14,5	47,00	5

Cu - 2 cables 1 screw



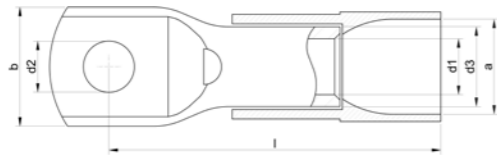
Cu-HCP 99,9% / Copper tinned
DIN EN 13600

mm ²	Ø mm	Art. N. (inspect. hole: no)	mm										kg (/100)	Pack
			d1	d3	d4	d5	d2	b	l	a	c1	c2		
2 x 70	1 x 12	ICD7012D	11,5	23,3	18	29,8	13	37	71,5	28	14,5	14,5	17,75	5
2 x 95	1 x 12	ICD9512D	14	26,1	22	33,6	13	42	81,5	35	14,5	14,5	26,30	5
2 x 120	1 x 12	ICD12012D	14,9	29,8	22,4	37,3	13	47	84,5	35	14,5	14,5	30,30	5

typically used tools: „GENERAL CATALOG TOOLS“



Cu - Intercable IT standard / insulated

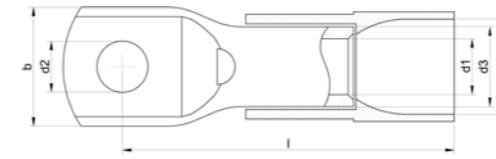


Cu-HCP 99,9% / Copper tinned
 DIN EN 13600

PA 6.6 / Poliamide insulation
 Black

mm ²	Ø mm	Art. N. (inspect. hole: yes)	d1	d3	d2	b	l	a	Pack
10	4	CIP10-M4	4,3	6,7	4,3	10,0	32,5	10,0	50
	5	CIP10-M5			5,3	10,0	33,5		50
	6	CIP10-M6			6,4	11,0	35,5		50
	8	CIP10-M8			8,4	15,0	38,0		50
	10	CIP10-M10			10,5	18,0	40,5		50
	12	CIP10-M12			13,0	19,0	41,5		50
16	5	CIP16-M5	5,4	7,8	5,3	12,0	36,5	11,0	50
	6	CIP16-M6			6,4	12,0	38,5		50
	8	CIP16-M8			8,4	15,0	40,5		50
	10	CIP16-M10			10,5	18,0	43,0		50
	12	CIP16-M12			13,0	20,0	44,0		50
25	5	CIP25-M5	6,9	9,4	5,3	14,0	39,5	13,0	50
	6	CIP25-M6			6,4	14,0	41,5		50
	8	CIP25-M8			8,4	15,0	43,5		50
	10	CIP25-M10			10,5	18,0	46,0		50
	12	CIP25-M12			13,0	20,0	47,0		50
	14	CIP25-M14			15,0	22,0	49,0		50
35	5	CIP35-M5	8,3	11,3	5,3	16,5	49,5	16,0	25
	6	CIP35-M6			6,4	16,5	49,5		25
	8	CIP35-M8			8,4	16,5	50,0		25
	10	CIP35-M10			10,5	18,0	52,5		25
	12	CIP35-M12			13,0	20,0	53,5		25
	14	CIP35-M14			15,0	22,0	56,0		25
50	6	CIP50-M6	9,6	13,1	6,4	19,0	53,0	18,0	25
	8	CIP50-M8			8,4	19,0	54,0		25
	10	CIP50-M10			10,5	20,0	56,0		25
	12	CIP50-M12			13,0	23,0	57,5		25
	14	CIP50-M14			15,0	25,0	59,5		25
	16	CIP50-M16			17,0	27,0	62,5		25
70	20	CIP50-M20			21,0	28,0	67,0		25
	6	CIP70-M6	11,3	14,7	6,4	22,5	63,0	21,0	25
	8	CIP70-M8			8,4	22,5	63,0		25
	10	CIP70-M10			10,5	22,5	64,5		25
	12	CIP70-M12			13,0	23,0	65,5		25
	14	CIP70-M14			15,0	26,0	68,0		25
16	CIP70-M16			17,0	28,0	70,5		25	

Cu - Intercable IT standard / insulated



Cu-HCP 99,9% / Copper tinned
 DIN EN 13600

PA 6.6 / Poliamide insulation
 Black

mm ²	Ø mm	Art. N. (inspect. hole: yes)	d1	d3	d2	b	l	a	Pack
95	6	CIP95-M6	13,5	17,5	6,4	25,0	69,0	23,0	25
	8	CIP95-M8			8,4	25,0	68,5		25
	10	CIP95-M10			10,5	25,0	70,0		25
	12	CIP95-M12			13,0	26,0	70,0		25
	14	CIP95-M14			15,0	26,0	72,0		25
	16	CIP95-M16			17,0	28,0	73,0		25
120	20	CIP95-M20			21,0	31,0	77,5		25
	8	CIP120-M8	15,5	20,0	8,4	29,0	72,5	26,0	25
	10	CIP120-M10			10,5	29,0	75,0		25
	12	CIP120-M12			13,0	29,0	74,5		25
150	14	CIP120-M14			15,0	29,0	75,5		25
	16	CIP120-M16			17,0	29,0	77,0		25
	20	CIP120-M20			21,0	35,0	82,0		25
	8	CIP150-M8	16,8	21,3	8,4	31,0	80,5	29,0	10
	10	CIP150-M10			10,5	31,0	81,5		10
	12	CIP150-M12			13,0	31,0	81,0		10
150	14	CIP150-M14			15,0	31,0	82,0		10
	16	CIP150-M16			17,0	31,0	83,0		10
	20	CIP150-M20			21,0	35,0	88,0		10

typically used tools: „GENERAL CATALOG TOOLS“



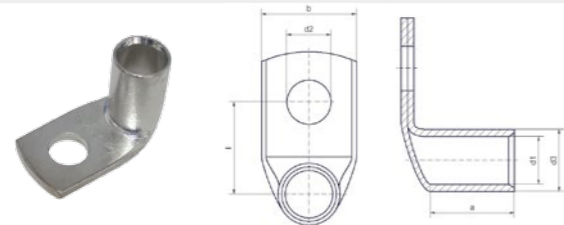
page: 138-141 hydraulic tool selection: page: 144



for INSULATED

crimping dies: page: 163-184

Cu - Intercable IT standard / 90°



Cu-HCP 99,9% / Copper tinned
DIN EN 13600



mm ²	Ø mm	Art. N. (inspect. hole: no)	d1	d3	d2	b	l	a	Pack
0,5 - 0,75	3	ICS075390	1,4	3,0	3,2	6,5	7,5	5,0	100
	4	ICS075490			4,3	8,5	8,5		100
	5	ICS075590			5,3	10,0	9,5		100
1,0 - 1,5	3	ICS1390	1,9	3,9	3,2	6,5	8,0	5,0	100
	4	ICS1490			4,3	8,5	9,0		100
	5	ICS1590			5,3	10,0	10,0		100
2,5	6	ICS1690	2,4	4,4	6,4	11,0	12,0	5,5	100
	4	ICS2490			4,3	8,5	9,2		100
	5	ICS2590			5,3	10,0	10,2		100
6	6	ICS2690	3,7	5,5	6,4	11,0	12,2	7,0	100
	8	ICS2890			8,4	14,0	14,2		100
	4	ICS4490			4,3	8,5	9,5		7,0
4	5	ICS4590	3,0	5,0	5,3	10,0	10,5	7,0	100
	6	ICS4690			6,4	11,0	12,5		100
	8	ICS4890			8,4	14,0	14,5		100
6	4	ICS6490	3,7	5,5	4,3	8,5	9,8	7,0	100
	5	ICS6590			5,3	10,0	10,8		100
	6	ICS6690			6,4	11,0	12,8		100
10	8	ICS6890	4,3	6,7	8,4	14,0	14,8	9,0	100
	5	CI10-M5-90			5,3	10,0	11,5		25
	6	CI10-M6-90			6,4	11,0	13,5		25
16	8	CI10-M8-90	5,4	7,8	8,4	15,0	15,5	10,0	25
	10	CI10-M10-90			10,5	18,0	17,5		25
	12	CI10-M12-90			13,0	20,0	18,5		25
25	5	CI16-M5-90	6,9	9,4	5,3	11,0	12,0	12,0	25
	6	CI16-M6-90			6,4	11,5	14,0		25
	8	CI16-M8-90			8,4	15,0	16,0		25
35	10	CI16-M10-90	8,3	11,3	10,5	18,0	18,0	15,0	25
	12	CI16-M12-90			13,0	20,0	19,0		25
	5	CI25-M5-90			5,3	14,0	13,0		25
50	6	CI25-M6-90	6,9	9,4	6,4	14,0	15,5	12,0	25
	8	CI25-M8-90			8,4	15,0	16,5		25
	10	CI25-M10-90			10,5	18,0	18,5		25
70	12	CI25-M12-90	8,3	11,3	13,0	20,0	19,5	15,0	25
	6	CI35-M6-90			6,4	16,5	16,0		25
	8	CI35-M8-90			8,4	16,5	18,0		25
100	10	CI35-M10-90	10,5	14,0	10,5	18,0	20,0	20,0	25
	12	CI35-M12-90			13,0	20,0	21,0		25

typically used tools: „GENERAL CATALOG TOOLS“



page: 137-141

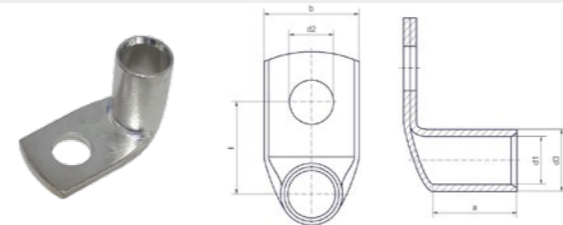
hydraulic tool selection: page: 144



! standard: I-series

crimping dies: page: 163-184

Cu - Intercable IT standard / 90°



Cu-HCP 99,9% / Copper tinned
DIN EN 13600



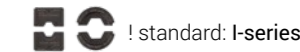
mm ²	Ø mm	Art. N. (inspect. hole: no)	d1	d3	d2	b	l	a	Pack	
50	6	CI50-M6-90	9,6	13,1	6,4	19,0	17,0	17,0	25	
	8	CI50-M8-90			8,4	19,0	19,0		25	
	10	CI50-M10-90			10,5	20,0	21,0		25	
70	12	CI50-M12-90	11,3	14,7	13,0	23,0	23,5	20,0	25	
	16	CI50-M16-90			17,0	27,0	25,0		25	
	8	CI70-M8-90			8,4	22,5	20,0		20,0	25
95	10	CI70-M10-90	13,5	17,5	10,5	22,5	22,0	22,0	25	
	12	CI70-M12-90			13,0	23,0	23,0		25	
	14	CI70-M14-90			15,0	26,0	26,0		25	
120	16	CI70-M16-90	15,5	20,0	17,0	28,0	30,0	25,0	25	
	8	CI95-M8-90			8,4	25,0	21,5		22,0	25
	10	CI95-M10-90			10,5	25,0	23,5		25	
150	12	CI95-M12-90	16,8	21,3	13,0	25,0	24,5	28,0	25	
	16	CI95-M14-90			17,0	28,0	27,5		25	
	20	CI95-M20-90			21,0	31,0	31,5		25	
185	8	CI120-M8-90	19,0	24,0	8,4	29,0	22,5	29,0	25	
	10	CI120-M10-90			10,5	29,0	25,0		25	
	12	CI120-M12-90			13,0	29,0	26,0		25	
240	16	CI120-M16-90	21,1	27,3	17,0	29,0	28,5	34,0	25	
	20	CI120-M20-90			21,0	35,0	33,5		10	
	8	CI150-M8-90			8,4	31,0	25,5		10	
300	10	CI150-M10-90	21,1	27,3	10,5	31,0	25,5	34,0	10	
	12	CI150-M12-90			13,0	31,0	26,5		10	
	16	CI150-M16-90			17,0	31,0	29,5		10	
350	20	CI150-M20-90	21,1	27,3	21,0	35,0	33,5	34,0	10	
	10	CI185-M10-90			10,5	35,0	27,0		29,0	10
	12	CI185-M12-90			13,0	35,0	28,0		10	
400	16	CI185-M16-90	21,1	27,3	17,0	35,0	31,0	34,0	10	
	20	CI185-M20-90			21,0	35,0	35,0		10	
	10	CI240-M10-90			10,5	38,0	28,0		34,0	10
500	12	CI240-M12-90	21,1	27,3	13,0	38,0	29,0	34,0	10	
	16	CI240-M16-90			17,0	38,0	32,0		10	
	20	CI240-M20-90			21,0	38,0	36,0		10	

typically used tools: „GENERAL CATALOG TOOLS“



page: 137-141

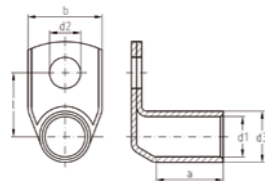
hydraulic tool selection: page: 144



! standard: I-series

crimping dies: page: 163-184

Cu - Intercable D standard / 90° „R-series“




Cu-HCP 99,9% / Copper tinned
DIN EN 13600



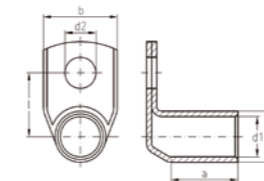
mm ²	Ø mm	Art. N. (inspect. hole: no)	mm						kg (/100)	Pack
			d1	d3	d2	b	l	a		
6	4	ICR6490	3,5	6,5	4,3	10	10,3	8	0,60	25
	5	ICR6590			5,3	11	11,3		0,62	25
	6	ICR6690			6,4	11	13,3		0,62	25
	8	ICR6890			8,4	15	15,3		0,64	25
	10	ICR61090			10,5	18	17,3		0,68	25
	12	ICR61290			13	20	18,3		0,66	25
10	5	ICR10590	4,5	7	5,3	12	11,5	9	0,54	25
	6	ICR10690			6,4	12	12,5		0,59	25
	8	ICR10890			8,4	15	15,5		0,67	25
	10	ICR101090			10,5	18	17,5		0,70	25
16	12	ICR101290			13	20	18,5		0,70	25
	5	ICR16590	5,5	8,5	5,3	12	13	12	1,07	25
	6	ICR16690			6,4	12	14,3		1,15	25
	8	ICR16890			8,4	15	16,3		1,20	25
25	10	ICR161090			10,5	18	18,3		1,23	25
	12	ICR161290			13	20	19,3		1,23	25
	6	ICR25690	7	10	6,4	15	15,5	14	1,48	25
	8	ICR25890			8,4	16	17,5		1,43	25
35	10	ICR251090			10,5	18	19,5		1,68	25
	12	ICR251290			13	20	20,5		1,62	25
	14	ICR251490			15	22	22,5		2,07	25
	6	ICR35690	8,5	12	6,4	17	16,5	16	2,10	25
50	8	ICR35890			8,4	17	18,5		2,31	25
	10	ICR351090			10,5	20	20,5		2,39	25
	12	ICR351290			13	22	21,5		2,37	25
	14	ICR351490			15	23	23,5		2,48	25
50	16	ICR351690			17	28	24,5		2,48	25
	6	ICR50690	10	14	6,4	20	17,5	18	3,00	25
	8	ICR50890			8,4	20	19,5		3,22	25
	10	ICR501090			10,5	20	21,5		3,32	25
	12	ICR501290			13	23	22,5		3,28	25
	14	ICR501490			15	23	24,5		3,37	25
50	16	ICR501690			17	27	28,5		3,77	25
	20	ICR502090			21	30	32,5		4,27	25

typically used tools: „GENERAL CATALOG TOOLS“



 standard: R-series
crimping dies: page: 163-184

Cu - Intercable D standard / 90° „R-series“

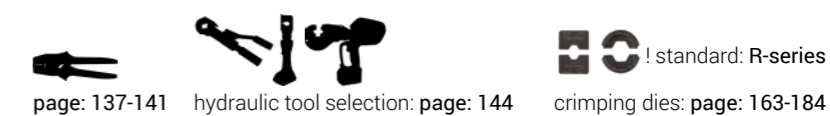



Cu-HCP 99,9% / Copper tinned
DIN EN 13600



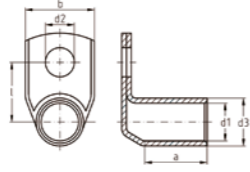
mm ²	Ø mm	Art. N. (inspect. hole: no)	mm						kg (/100)	Pack
			d1	d3	d2	b	l	a		
70	6	ICR70690	12	16,5	6,4	24	18,8	20	4,41	25
	8	ICR70890			8,4	24	20,8		4,47	25
	10	ICR701090			10,5	24	22,8		5,00	25
	12	ICR701290			13	24	23,8		4,87	25
	14	ICR701490			15	25	25,8		4,84	25
	16	ICR701690			17	28	26,8		5,11	25
95	20	ICR702090			21	29	30,8		5,26	25
	8	ICR95890	13,5	18	8,4	26	21,5	22	5,33	25
	10	ICR951090			10,5	26	23,5		5,59	25
	12	ICR951290			13	26	24,5		5,58	25
120	14	ICR951490			15	26	26,5		5,95	25
	16	ICR951690			17	28	27,5		6,00	25
	8	ICR120890	15	20	8,4	29	22,5	25	7,88	25
	10	ICR1201090			10,5	29	24,5		8,19	25
150	12	ICR1201290			13	29	25,5		8,27	25
	16	ICR1201690			17	30	28,5		8,52	25
	8	ICR150890	16,8	21,3	8,4	31	25,7	28	8,03	10
	10	ICR1501090			10,5	31	25,7		8,07	10
185	12	ICR1501290			13	31	26,7		8,29	10
	16	ICR1501690			17	31	29,7		8,50	10
	20	ICR1502090			21	35	33,7		8,89	10
	10	ICR1851090	19	24	10,5	35	27	29	11,41	10
240	12	ICR1851290			13	35	28		12,21	10
	16	ICR1851690			17	35	31		12,69	10
	20	ICR1852090			21	35	35		12,70	10
	10	ICR2401090	21	26	10,5	38	28	34	13,34	10
300	12	ICR2401290			13	38	29		13,93	10
	16	ICR2401690			17	38	32		14,72	10
	20	ICR2402090			21	38	36		14,54	10
300	12	ICR3001290	24	30	43	43	31	41	19,72	5
	16	ICR3001690			17	43	34		19,70	5
	20	ICR3002090			21	43	38		21,81	5

typically used tools: „GENERAL CATALOG TOOLS“



 standard: R-series
crimping dies: page: 163-184

Cu - Intercable D standard / 90° / for flexible cable class 5/6 „F-series“

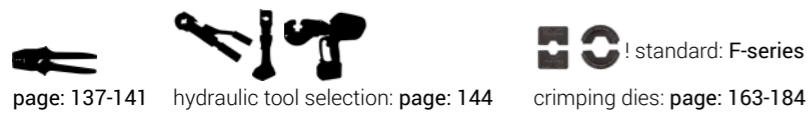


Cu-HCP 99,9% / Copper tinned
DIN EN 13600

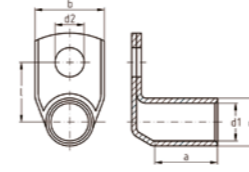


mm ²	cable min. Ø mm	Ø mm	Art. N. (inspect. hole: no)	mm						kg (/100)	Pack
				d1	d3	d2	b	l	a		
10	4,0	5	ICF10590	5	8	5,3	12	12	11	0,86	25
		6	ICF10690			6,4	13	14		0,87	25
		8	ICF10890			8,4	15	16		0,94	25
		10	ICF101090			10,5	18	18		0,97	25
		12	ICF101290			13	20	19		0,98	25
16	5,0	5	ICF16590	6	9	5,3	15	12,5	12	0,94	25
		6	ICF16690			6,4	15	14,5		1,05	25
		8	ICF16890			8,4	15	16,5		1,18	25
		10	ICF161090			10,5	18	18,5		1,25	25
		12	ICF161290			13	20	19,5		1,43	25
25	6,5	6	ICF25690	7,7	10,7	6,4	16	15,9	15	1,55	25
		8	ICF25890			8,4	16	17,9		1,53	25
		10	ICF251090			10,5	18	19,9		1,89	25
		12	ICF251290			13	20	20,9		1,69	25
		35	ICF35690	9,2	12,4	6,4	18	16,7	17	1,97	25
35	7,8	8	ICF35890			8,4	18	18,7		2,20	25
		10	ICF351090			10,5	18,5	20,7		2,34	25
		12	ICF351290			13	23	21,7		2,23	25
		16	ICF351690			17	28	24,7		2,25	25
		50	9,0	6	ICF50690	11,2	14,8	6,4	22	17,9	20
8	ICF50890					8,4	22	19,9		3,15	25
10	ICF501090					10,5	22	21,9		3,30	25
12	ICF501290					13	23	22,9		3,36	25
16	ICF501690					17	28	25,9		3,57	25
70	11,0	8	ICF70890	13,5	17,5	8,4	25	21,3	22	4,53	50
		10	ICF701090			10,5	25	23,3		4,85	50
		12	ICF701290			13	25	24,3		5,07	50
		16	ICF701690			17	28	27,3		5,10	50
		20	ICF702090			21	31	31,3		5,40	50

typically used tools: „GENERAL CATALOG TOOLS“



Cu - Intercable D standard / 90° / for flexible cable class 5/6 „F-series“



Cu-HCP 99,9% / Copper tinned
DIN EN 13600

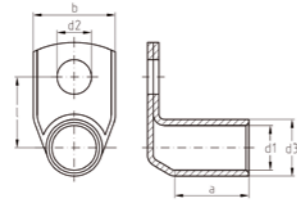


mm ²	cable min. Ø mm	Ø mm	Art. N. (inspect. hole: no)	mm						kg (/100)	Pack
				d1	d3	d2	b	l	a		
95	13,0	10	ICF951090	15,5	20	10,5	29	25	25	7,50	25
		12	ICF951290			13	29	26		7,22	25
		16	ICF951690			17	29	28,5		7,50	25
		20	ICF952090			21	35	32,5		7,70	25
120	15,0	10	ICF1201090	16,8	21,3	10,5	31	25,7	28	7,86	25
		12	ICF1201290			13	31	26,7		8,02	25
		16	ICF1201690			17	31	29,7		8,33	25
		20	ICF1202090			21	35	33,7		8,61	25
150	16,3	10	ICF1501090	19	24	10,5	35	27	29	10,06	10
		12	ICF1501290			13	35	28		10,70	10
		16	ICF1501690			17	35	31		11,04	10
		20	ICF1502090			21	35	35		11,96	10
185	18,5	12	ICF1851290	21	26	13	38	29	34	12,69	10
		16	ICF1851690			17	38	32		13,46	10
		20	ICF1852090			21	38	36		14,02	10
		240	ICF2401290	24	30	13	43	31	41	19,72	10
240	20,5	16	ICF2401690			17	43	34		19,70	10
		20	ICF2402090			21	43	38		21,81	10

typically used tools: „GENERAL CATALOG TOOLS“



Cu - DIN 46235 standard / 90°

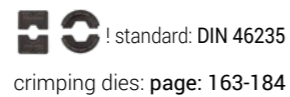


Cu-HCP 99,9% / Copper tinned
DIN EN 13600
option: blank (no tin): ICDxy90BK

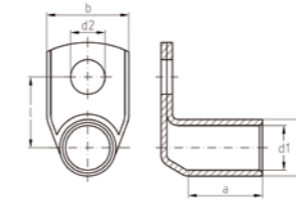
DIN 46235
(pipe)

mm ²	Ø mm	Art. N. (inspect. hole: no)	Reference	mm						kg (/100)	Pack	Art. N. (blank)
				d1	d3	d2	b	l	a			
10	6	ICD10690	6	4,4	6	6,4	10	13	10	0,35	25	ICD10690BK
	8	ICD10890				8,4	13	15		0,50	25	ICD10890BK
16	6	ICD16690	8	5,5	8,5	6,4	13	14,3	20	1,27	25	ICD16690BK
	8	ICD16890				8,4	13	16,3		1,30	25	ICD16890BK
	10	ICD161090				10,5	16,5	18,3		1,41	25	ICD161090BK
	12	ICD161290				13	19	19,3		1,38	25	ICD161290BK
25	6	ICD25690	10	7	10	6,4	15	15,5	20	1,68	25	ICD25690BK
	8	ICD25890				8,4	16	17,5		1,76	25	ICD25890BK
	10	ICD251090				10,5	16	19,5		1,84	25	ICD251090BK
	12	ICD251290				13	19	20,5		1,72	25	ICD251290BK
35	6	ICD35690	12	8,2	12,5	6,4	17	16,8	20	2,74	25	ICD35690BK
	8	ICD35890				8,4	17	18,8		3,04	25	ICD35890BK
	10	ICD351090				10,5	19	20,8		3,12	25	ICD351090BK
	12	ICD351290				13	21	21,8		3,26	25	ICD351290BK
50	8	ICD50890	14	9,8	14,5	8,4	20	19,8	28	4,68	25	ICD50890BK
	10	ICD501090				10,5	22	21,8		4,88	25	ICD501090BK
	12	ICD501290				13	24	22,8		5,17	25	ICD501290BK
	16	ICD501690				17	27	25,8		4,95	25	ICD501690BK
70	8	ICD70890	16	11,3	16,5	8,4	24	20,8	28	5,93	25	ICD70890BK
	10	ICD701090				10,5	24	22,8		6,55	25	ICD701090BK
	12	ICD701290				13	24	23,8		6,56	25	ICD701290BK
	16	ICD701690				17	29	26,8		6,31	25	ICD701690BK
95	8	ICD95890	18	13,5	19	8,4	28	22	35	8,50	25	ICD95890BK
	10	ICD951090				10,5	28	24		9,37	25	ICD951090BK
	12	ICD951290				13	28	25		9,49	25	ICD951290BK
	16	ICD951690				17	32	28		9,67	25	ICD951690BK
120	10	ICD1201090	20	15,5	21	10,5	32	25,5	35	12,09	25	ICD1201090BK
	12	ICD1201290				13	32	26,5		11,21	25	ICD1201290BK
	16	ICD1201690				17	32	29,5		11,98	25	ICD1201690BK
	20	ICD1202090				21	38	33,5		12,39	25	ICD1202090BK

typically used tools: „GENERAL CATALOG TOOLS“



Cu - DIN 46235 standard / 90°

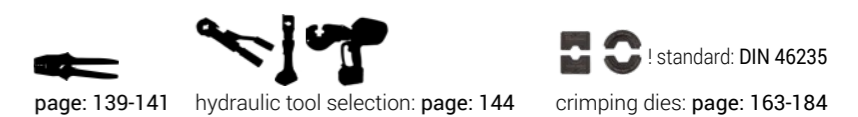


Cu-HCP 99,9% / Copper tinned
DIN EN 13600
option: blank (no tin): ICDxy90BK

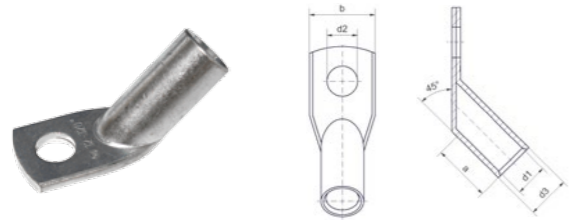
DIN 46235
(pipe)

mm ²	Ø mm	Art. N. (inspect. hole: no)	Reference	mm						kg (/100)	Pack	Art. N. (blank)
				d1	d3	d2	b	l	a			
150	8	ICD150890	22	17	23,5	8,4	34	26,8	35	12,66	10	ICD150890BK
	10	ICD1501090				10,5	34	26,8		14,08	10	ICD1501090BK
	12	ICD1501290				13	34	27,8		14,30	10	ICD1501290BK
	16	ICD1501690				17	34	30,8		14,32	10	ICD1501690BK
	20	ICD1502090				21	34	34,8		15,18	10	ICD1502090BK
185	8	ICD185890	25	19	25,5	8,4	37	25,8	40	15,70	10	ICD185890BK
	10	ICD1851090				10,5	37	27,8		16,83	10	ICD1851090BK
	12	ICD1851290				13	37	28,8		17,45	10	ICD1851290BK
	16	ICD1851690				17	37	31,8		17,18	10	ICD1851690BK
	20	ICD1852090				21	40	35,8		20,20	10	ICD1852090BK
240	12	ICD2401290	28	21,5	29	13	42	30,5	40	22,61	10	ICD2401290BK
	16	ICD2401690				17	42	33,5		24,46	10	ICD2401690BK
	20	ICD2402090				21	42	37,5		25,59	10	ICD2402090BK
300	12	ICD3001290	32	24,5	32	13	48,5	32	50	29,08	5	ICD3001290BK
	16	ICD3001690				17	48,5	35		30,92	5	ICD3001690BK
	20	ICD3002090				21	48,5	39		38,60	5	ICD3002090BK

typically used tools: „GENERAL CATALOG TOOLS“



Cu - Intercable IT standard / 45°



Cu-HCP 99,9% / Copper tinned
DIN EN 13600



mm ²	Ø mm	Art. N. (inspect. hole: no)	mm					Pack
			d1	d3	d2	b	a	
10	5	CI10-M5-45	4,3	6,7	5,3	10,0	9,0	25
	6	CI10-M6-45			6,4	11,0	25	
	8	CI10-M8-45			8,4	15,0	25	
16	6	CI16-M6-45	5,4	7,8	6,4	11,5	10,0	25
	8	CI16-M8-45			8,4	15,0	25	
	10	CI16-M10-45			10,5	18,0	25	
25	5	CI25-M5-45	6,9	9,4	5,3	14,0	12,0	25
	6	CI25-M6-45			6,4	14,0	25	
	8	CI25-M8-45			8,4	15,0	25	
	10	CI25-M10-45			10,5	18,0	25	
35	12	CI25-M12-45			13,0	20,0	25	
	6	CI35-M6-45	8,3	11,3	6,4	16,5	15,0	25
	8	CI35-M8-45			8,4	16,5	25	
10	CI35-M10-45	10,5			18,0	25		
50	12	CI35-M12-45			13,0	20,0	25	
	6	CI50-M6-45	9,6	13,1	6,4	19,0	17,0	25
	8	CI50-M8-45			8,4	19,0	25	
10	CI50-M10-45	10,5			20,0	25		
70	12	CI50-M12-45			13,0	23,0	25	
	6	CI70-M6-45	11,3	14,7	6,4	22,5	20,0	25
	8	CI70-M8-45			8,4	22,5	25	
10	CI70-M10-45	10,5			22,5	25		
95	12	CI70-M12-45			13,0	23,0	25	
	8	CI95-M8-45	13,5	17,5	8,4	25,0	22,0	25
	10	CI95-M10-45			10,5	25,0	25	
12	CI95-M12-45	13,0			25,0	25		
120	8	CI120-M8-45	15,5	20,0	8,4	29,0	25,0	25
	10	CI120-M10-45			10,5	29,0	25	
	12	CI120-M12-45			13,0	29,0	25	
	16	CI120-M16-45			17,0	29,0	25	
150	8	CI150-M8-45	16,8	21,3	8,4	31,0	28,0	10
	10	CI150-M10-45			10,5	31,0	10	
	12	CI150-M12-45			13,0	31,0	10	
	16	CI150-M16-45			17,0	31,0	10	
185	10	CI185-M10-45	19,0	24,0	10,5	35,0	29,0	10
	12	CI185-M12-45			13,0	35,0	10	
	16	CI185-M16-45			17,0	35,0	10	
	20	CI185-M20-45			21,0	35,0	10	
240	12	CI240-M12-45	21,1	27,3	13,0	39,0	34,0	10
	14	CI240-M14-45			15,0	39,0	10	
	16	CI240-M16-45			17,0	39,0	10	
	20	CI240-M20-45			21,0	39,0	10	

typically used tools: „GENERAL CATALOG TOOLS“



! standard: I-series
page: 137-141 hydraulic tool selection: page: 144
crimping dies: page: 163-184

Cu - Intercable D standard / 45° „R-series“



Cu-HCP 99,9% / Copper tinned
DIN EN 13600



mm ²	Ø mm	Art. N. (inspect. hole: no)	mm					kg (/100)	Pack
			d1	d3	d2	b	a		
10	5	ICR10545	4,5	7	5,3	12	9	0,55	25
	6	ICR10645			6,4	12	0,58	25	
	8	ICR10845			8,4	15	0,65	25	
16	5	ICR16545	5,5	8,5	5,3	12	12	0,95	25
	6	ICR16645			6,4	12	1,02	25	
	8	ICR16845			8,4	15	1,20	25	
	10	ICR161045			10,5	18	1,17	25	
25	6	ICR25645	7	10	6,4	15	14	1,55	25
	8	ICR25845			8,4	16	1,51	25	
	10	ICR251045			10,5	18	2,05	25	
	12	ICR251245			13	20	1,70	25	
35	6	ICR35645	8,5	12	6,4	17	16	2,17	25
	8	ICR35845			8,4	17	2,23	25	
	10	ICR351045			10,5	20	2,34	25	
	12	ICR351245			13	22	2,40	25	
50	8	ICR50845	10	14	8,4	20	18	3,34	25
	10	ICR501045			10,5	20	3,65	25	
	12	ICR501245			13	23	3,65	25	
	8	ICR70845			12	16,5	8,4	24	20
10	ICR701045	10,5	24	5,23			25		
12	ICR701245	13	24	5,17			25		
95	8	ICR95845	13,5	18	8,4	26	22	8,00	25
	10	ICR951045			10,5	26	6,20	25	
	12	ICR951245			13	26	6,20	25	
120	8	ICR120845	15	20	8,4	29	25	7,80	25
	10	ICR1201045			10,5	29	8,36	25	
	12	ICR1201245			13	29	8,68	25	
	16	ICR1201645			17	30	8,85	25	
150	8	ICR150845*	16,8	21,3	8,4	31	28	10,20	10
	10	ICR1501045			10,5	31	9,87	10	
	12	ICR1501245			13	31	9,68	10	
	16	ICR1501645			17	31	10,12	10	
185	10	ICR1851045	19	24	10,5	35	29	12,90	10
	12	ICR1851245			13	35	12,29	10	
	16	ICR1851645			17	35	11,96	10	
	20	ICR1852045			21	35	14,58	10	
240	12	ICR2401245	21	26	13	38		15,58	10
	16	ICR2401645			17	38	16,51	10	
	20	ICR2402045			21	38	17,04	10	

typically used tools: „GENERAL CATALOG TOOLS“

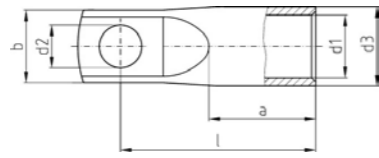


page: 137-141 hydraulic tool selection: page: 144

! standard: R-series

crimping dies: page: 163-184

Cu - Intercable IT standard / NARROW



Cu-HCP 99,9% / Copper tinned
DIN EN 13600

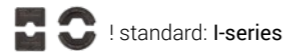


mm ²	Ø mm	Art. N. (inspect. hole: yes)	mm						Pack
			d1	d3	d2	b	l	a	
35	6	CI35-M6-PR	8,3	11,3	6,4	15,0	32,5	16,0	25
50	6	CI50-M6-PR	9,6	13,1	6,4	15,0	36,0	18,0	25
	10	CI50-M10-PR							
70	6	CI70-M6-PR	11,3	14,7	6,4	17,0	41,0	21,0	25
	10	CI70-M10-PR							
95	8	CI95-M8-PR	13,5	17,5	8,4	19,0	48,0	23,0	25
	10	CI95-M10-PR							
120	8	CI120-M8-PR	15,5	20,0	8,4	19,0	51,0	26,0	25
	10	CI120-M10-PR							
150	8	CI150-M8-PR	16,8	21,3	8,4	19,0	55,0	29,0	10
	10	CI150-10-PR							
185	12	CI185-M12-PR	19,0	24,0	13,0	31,0	59,5	30,0	10
240	12	CI240-M12-PR	21,1	27,3	13,0	31,5	69,0	35,0	10

typically used tools: „GENERAL CATALOG TOOLS“

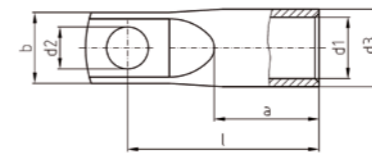


page: 137-141 hydraulic tool selection: page: 144



! standard: I-series
crimping dies: page: 163-184

Cu - Intercable D standard / NARROW „R-series“



Cu-HCP 99,9% / Copper tinned
DIN EN 13600

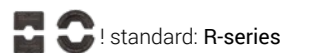


mm ²	Ø mm	Art. N. (inspect. hole: no)	mm						kg (/100)	Pack
			d1	d3	d2	b	l	a		
35	6	ICR356S	8,5	12	6,4	15	33	17	1,80	25
	8	ICR358S*				15	33	17		
50	6	ICR506S	10	14	6,4	15	37	19	2,73	25
	8	ICR508S				17	39	2,83		
70	10	ICR5010S			10,5	17	41		2,99	25
	6	ICR706S				11,8	16,5	6,4		
70	8	ICR708S			8,4	17	43		4,30	25
	10	ICR7010S						10,5		
95	12	ICR7012S			13	19	46		4,48	25
	6	ICR956S				13,5	18	6,4		
95	8	ICR958S			8,4	19	45		4,90	25
	10	ICR9510S						10,5		
120	12	ICR9512S			13	19	48		5,20	25
	6	ICR1206S				14,7	20	6,4		
120	8	ICR1208S			8,4	20	49		6,73	25
	10	ICR12010S						10,5		
150	12	ICR12012S			13	20	52		7,34	25
	6	ICR1506S				16,3	21,3	6,4		
150	8	ICR1508S			8,4	19	51		7,11	10
	10	ICR15010S						10,5		
185	12	ICR15012S			13	22	59		7,63	10
	10	ICR18510S				18,7	24	10,5		
240	12	ICR18512S			13	26	59,5		10,36	10
	16	ICR18516S						17		
240	10	ICR24010S	21	26	10,5	30	65	35	11,96	10
	12	ICR24012S						13		
300	16	ICR24016S			17	30	68		12,26	10
	10	ICR30010S				23,5	30	10,5		
300	12	ICR30012S			13	30	79		20,08	5
	16	ICR30016S						17		

typically used tools: „GENERAL CATALOG TOOLS“

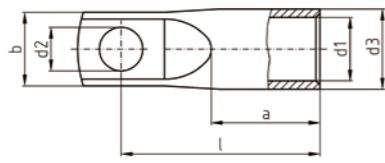


page: 137-141 hydraulic tool selection: page: 144



! standard: R-series
crimping dies: page: 163-184

Cu - Intercable D standard / NARROW, for flexible cable class 5/6 „F-series“



Cu-HCP 99,9% / Copper tinned
DIN EN 13600

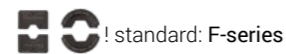


mm ²	cable min. Ø mm	Ø mm	Art. N. (inspect. hole: no)	mm						kg (/100)	Pack		
				d1	d3	d2	b	l	a				
35	7,8	6	ICF356S	9,2	12,4	6,4	15	35	18	1,77	25		
50	9,0	6	ICF506S	11	14,8	6,4	15	38,5	21	2,70	25		
		8	ICF508S				17		41			3,20	25
		10	ICF5010S				19		45,5			3,30	25
70	11,0	6	ICF706S	13,4	17,5	6,4	18	45,5	23	4,32	25		
		8	ICF708S				18		46			4,50	25
		10	ICF7010S				19		48			4,55	25
		12	ICF7012S				22		49			4,73	25
95	13,0	6	ICF956S	14,9	20	6,4	19	47,5	26	5,94	25		
		8	ICF958S				19		48,5			6,25	25
		10	ICF9510S				19		51,5			6,49	25
		12	ICF9512S				22		54			6,42	25
120	15,0	6	ICF1206S	16,3	21,3	6,4	19	53	29	7,11	25		
		8	ICF1208S				19		51			7,11	25
		10	ICF12010S				19		53			7,34	25
		12	ICF12012S				22		59			7,63	25
150	16,3	6	ICF1506S	18,7	24	6,4	26	56	30	8,58	10		
		8	ICF1508S				26		58			9,18	10
		10	ICF15010S				26		60			10,32	10
		12	ICF15012S				26		59,5			10,18	10
185	18,5	10	ICF18510S	21	26	10,5	30	65	35	11,72	10		
		12	ICF18512S				30		64			11,27	10
		16	ICF18516S				30		68			11,76	10
		240	20,5				10		ICF24010S			23,5	30
12	ICF24012S	30		79	20,08	10							
16	ICF24016S	30		81	20,60	10							

typically used tools: „GENERAL CATALOG TOOLS“



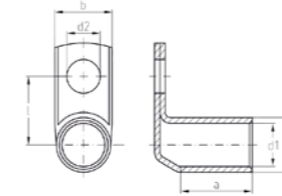
page: 137-141 hydraulic tool selection: page: 144



! standard: F-series

crimping dies: page: 163-184

Cu - Intercable D standard / 90°, NARROW, for flexible cable class 5/6 „F-series“



Cu-HCP 99,9% / Copper tinned
DIN EN 13600

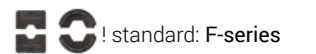


mm ²	cable min. Ø mm	Ø mm	Art. N. (inspect. hole: no)	mm						kg (/100)	Pack		
				d1	d3	d2	b	l	a				
35	7,8	6	ICF35690S	9,2	12,4	6,4	15	16,7	17	1,80	25		
50	9,0	6	ICF50690S	11,0	14,8	6,4	15	17,9	20	2,60	25		
		8	ICF50890S				17		19,9			2,90	25
		10	ICF501090S				19		21,9			3,00	25
70	11,0	6	ICF70690S	13,4	17,5	6,4	18	20	22	4,30	25		
		8	ICF70890S				18		22			4,50	25
		10	ICF701090S				19		24			4,80	25
		12	ICF701290S				22		27			4,80	25
95	13,0	6	ICF95690S	14,9	20	6,4	19	21	25	6,40	25		
		8	ICF95890S				19		23			6,70	25
		10	ICF951090S				19		25			7,00	25
		12	ICF951290S				22		26			6,79	25
120	15,0	6	ICF120690S	16,3	21,3	6,4	19	21,7	28	7,30	25		
		8	ICF120890S				19		23,7			7,70	25
		10	ICF1201090S				19		25,7			7,90	25
		12	ICF1201290S				22		26,7			8,90	25
150	16,3	6	ICF150690S	18,7	24	6,4	26	23	29	9,20	10		
		8	ICF150890S				26		25			9,80	10
		10	ICF1501090S				26		27			9,96	10
		12	ICF1501290S				26		28			10,20	10
185	18,5	10	ICF1851090S	21	26	10,5	30	28	34	11,90	10		
		12	ICF1851290S				30		29			11,90	10
		16	ICF1851690S				30		32			12,30	10
		240	20,5				10		ICF2401090S			23,5	30
12	ICF2401290S	30		31	18,70	10							
16	ICF2401690S	30		34	19,20	10							

typically used tools: „GENERAL CATALOG TOOLS“



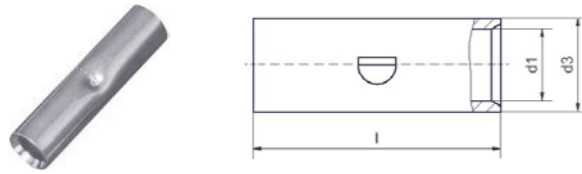
page: 137-141 hydraulic tool selection: page: 144



! standard: F-series

crimping dies: page: 163-184

Cu - Intercable IT standard



Cu-HCP 99,9% / Copper tinned
DIN EN 13600

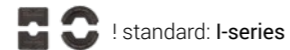


mm ²	Art. N.	mm			Pack
		d1	d3	l	
1,0-1,5	CTT-1.5	1,9	3,9	15,0	50
2,5	CTT-2.5	2,4	4,4	16,0	50
4	CTT-4	3,0	5,0	19,0	50
6	CTT-6	3,7	5,5	19,0	50
10	CTT-10	4,3	6,7	25,0	50
16	CTT-16	5,4	7,8	27,0	50
25	CTT-25	6,9	9,4	29,0	50
35	CTT-35	8,3	11,3	33,0	25
50	CTT-50	9,6	13,1	37,0	25
70	CTT-70	11,3	14,7	39,0	25
95	CTT-95	13,5	17,5	43,0	25
120	CTT-120	15,5	20,0	47,0	25
150	CTT-150	16,8	21,3	58,0	10
185	CTT-185	19,0	24,0	64,0	10
240	CTT-240	21,1	27,3	75,0	10
300	CTT-300	24,0	30,0	90,0	5
400	CTT-400	27,0	35,0	94,0	5
500	CTT-500	31,0	38,0	98,0	5
630	CTT-630	34,0	41,0	105,0	5

typically used tools: „GENERAL CATALOG TOOLS“



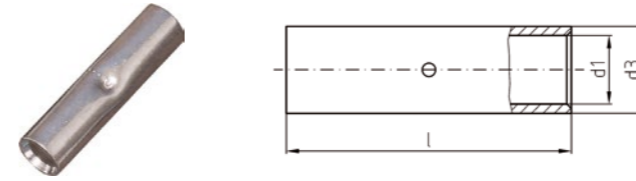
page: 137-141 hydraulic tool selection: page: 144



! standard: I-series

crimping dies: page: 163-184

Cu - Intercable D standard „R-series“



Cu-HCP 99,9% / Copper tinned
DIN EN 13600

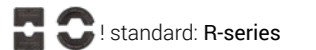


mm ²	Art. N.	mm			kg (/100)	Pack
		d1	d3	l		
0,5-0,75	ICR075V	1,4	3	15	0,08	50
1,0-1,5	ICR1V	1,9	3,9	15	0,12	50
2,5	ICR2V	2,4	4,4	16	0,15	50
4	ICR4V	3	5	19	0,21	50
6	ICR6V	3,5	6,5	25	0,52	50
10	ICR10V	4,5	7	30	0,50	50
16	ICR16V	5,5	8,5	35	1,00	50
25	ICR25V	7	10	40	1,41	50
35	ICR35V	8,5	12	45	2,17	25
50	ICR50V	10	14	50	3,32	25
70	ICR70V	12	16,5	55	4,91	25
95	ICR95V	13,5	18	60	6,09	25
120	ICR120V	15	20	65	7,88	25
150	ICR150V	16,8	21,3	70	8,68	10
185	ICR185V	19	24	75	11,63	10
240	ICR240V	21	26	85	14,79	10
300	ICR300V	24	30	100	22,40	5
400	ICR400V	27,5	33,5	100	26,17	5

typically used tools: „GENERAL CATALOG TOOLS“



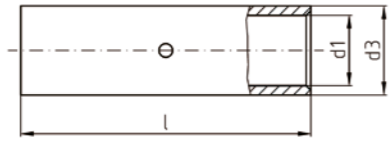
page: 137-141 hydraulic tool selection: page: 144



! standard: R-series

crimping dies: page: 163-184

Cu - Intercable D standard / for flexible cables class 5/6 „F-series“



Cu-HCP 99,9% / Copper tinned
DIN EN 13600




mm ²	cable min. Ø mm	Art. N.	mm			kg (/100)	Pack
			d1	d3	l		
10	4,0	ICF10V	5	8	30	0,83	25
16	5,0	ICF16V	6	9	35	1,11	25
25	6,5	ICF25V	7,7	10,7	40	1,50	25
35	7,8	ICF35V	9,2	12,4	45	2,19	25
50	9,0	ICF50V	11,2	14,8	50	3,24	25
70	11,0	ICF70V	13,5	17,5	60	5,10	25
95	13,0	ICF95V	15,5	20	65	7,49	25
120	15,0	ICF120V	16,8	21,3	65	8,44	25
150	16,3	ICF150V	19	24	70	10,56	25
185	18,5	ICF185V	21	26	85	14,01	25
240	20,5	ICF240V	24	30	100	22,73	25

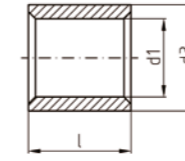
typically used tools: „GENERAL CATALOG TOOLS“



page: 137-141 hydraulic tool selection: page: 144

 standard: F-series
crimping dies: page: 163-184

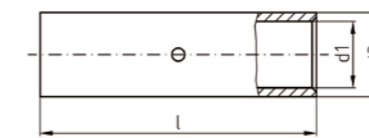
Cu - DIN 46341 p. 1 standard, form A



Cu-HCP 99,9% / Copper tinned

mm ²	Art. N.	mm			kg (/100)	Pack
		d1	d3	l		
0,5-1	ICQ1PV	7	1,6	3,3	0,04	100
1,5-2,5	ICQ2PV	7	2,3	4	0,05	100
4-6	ICQ6PV	7	3,6	5,7	0,09	100
10	ICQ10PV	9	4,6	6,8	0,15	100
16	ICQ16PV	10	5,9	8,3	0,23	100
25	ICQ25PV	12,5	7,7	10,7	0,45	100
35	ICQ35PV	14	9,2	12,4	0,65	100
50	ICQ50PV	17,5	11,2	14,8	1,13	100
70	ICQ70PV	18	13,5	17,5	1,59	100
95	ICQ95PV	19	15	20	2,34	50
120	ICQ120PV	21	16,7	22,7	3,53	50
150	ICQ150PV	25	19	25,5	5,02	50

Cu - DIN 46341 p. 1 standard, form B




Cu-HCP 99,9% / Copper tinned

mm ²	Art. N.	mm			kg (/100)	Pack
		d1	d3	l		
0,5-1	ICQ1PVL	15	1,6	3,3	0,09	100
1,5-2,5	ICQ2PVL	15	2,3	4	0,11	100
4-6	ICQ6PVL	15	3,6	5,7	0,18	100
10	ICQ10PVL	20	4,6	6,8	0,36	100
16	ICQ16PVL	26	5,9	8,3	0,61	100
25	ICQ25PVL	29	7,7	10,7	1,13	100
35	ICQ35PVL	32	9,2	12,4	1,55	50
50	ICQ50PVL	38	11,2	14,8	2,44	50
70	ICQ70PVL	42	13,5	17,5	3,73	50
95	ICQ95PVL	48	15	20	6,08	50
120	ICQ120PVL	52	16,7	22,7	8,67	50
150	ICQ150PVL	56	19	25,5	11,25	25

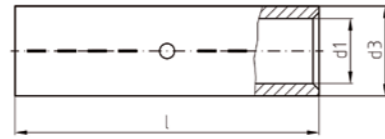
typically used tools: „GENERAL CATALOG TOOLS“



page: 137-141 hydraulic tool selection: page: 144

 standard: DIN 46341
crimping dies: page: 163-184

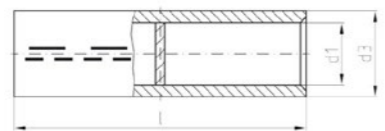
Cu - DIN 46267 p. 1 standard



Cu-HCP 99,9% / Copper tinned
DIN EN 13600
option: blank (no tin): ICDxyBK
DIN 46267 p. 1

mm ²	Art. N.	Reference	mm			kg (/100)	Pack	Art. N. (blank)
			d1	d3	l			
6	ICD6V	5	3,7	5,5	30	0,35	50	ICD6VBK
10	ICD10V	6	4,4	6	30	0,35	50	ICD10VBK
16	ICD16V	8	5,5	8,5	50	1,53	50	ICD16VBK
25	ICD25V	10	7	10	50	1,86	50	ICD25VBK
35	ICD35V	12	8,2	12,5	50	3,23	25	ICD35VBK
50	ICD50V	14	9,8	14,5	56	4,52	25	ICD50VBK
70	ICD70V	16	11,3	16,5	56	5,64	25	ICD70VBK
95	ICD95V	18	13,5	19	70	8,98	25	ICD95VBK
120	ICD120V	20	15,5	21	70	10,33	25	ICD120VBK
150	ICD150V	22	17	23,5	80	15,03	10	ICD150VBK
185	ICD185V	25	19	25,5	85	16,78	10	ICD185VBK
240	ICD240V	28	21,5	29	90	23,20	10	ICD240VBK
300	ICD300V	32	24,5	32	100	30,37	5	ICD300VBK
400	ICD400V	38	27,5	38,5	150	76,70	5	ICD400VBK
500	ICD500V	42	31	42	160	88,25	1	ICD500VBK
625	ICD625V	44	34,5	44	160	82,50	1	ICD625VBK
800	ICD800V	52	40	52	200	152,00	1	ICD800VBK
1000	ICD1000V	58	44	58	200	197,00	1	ICD1000VBK

Cu - pipe: DIN 46267 p. 1 standard / closed middle



Cu-HCP 99,9% / Copper tinned
DIN EN 13600
option: blank (no tin): ICDxyBK
DIN 46267 p. 1 (pipe)

mm ²	Art. N.	Reference	mm			kg (/100)	Pack	Art. N. (blank)
			d1	d3	l			
35	ICD35VL	12	8,2	12,5	50	3,43	10	ICD35VLBK
50	ICD50VL	14	9,8	14,5	56	4,63	10	ICD50VLBK
70	ICD70VL	16	11,3	16,5	56	5,94	10	ICD70VLBK
95	ICD95VL	18	13,5	19	70	9,28	10	ICD95VLBK
120	ICD120VL	20	15,5	21	70	10,93	10	ICD120VLBK
150	ICD150VL	22	17	23,5	80	15,73	5	ICD150VLBK
185	ICD185VL	25	19	25,5	85	17,10	5	ICD185VLBK
240	ICD240VL	28	21,5	29	90	25,34	5	ICD240VLBK

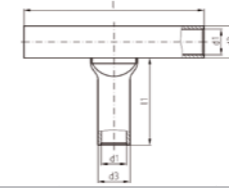
typically used tools: „GENERAL CATALOG TOOLS“



! standard: DIN 46267



Cu - Intercable D standard / „T“ „R-series“

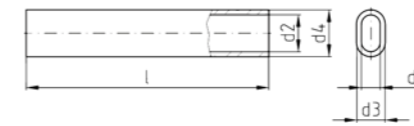


Cu-HCP 99,9% / Copper tinned
DIN EN 13600



mm ²	Art. N.	mm				kg (/100)	Pack
		d1	d3	l	l1		
1,0-1,5	ICR1T	1,9	3,9	30	16	0,36	25
2,5	ICR2T	2,4	4,4	30	16	0,45	25
4	ICR4T	3	5	35	16,5	0,57	25
6	ICR6T	3,5	6,5	35	17	1,08	25
10	ICR10T	4,5	7	45	25	1,40	25
16	ICR16T	5,5	8,5	50	26	2,30	25
25	ICR25T	7	10	50	27	2,40	25
35	ICR35T	8,5	12	60	31	4,50	10
50	ICR50T	10	14	72	35	7,20	10
70	ICR70T	12	16,5	77	37	10,35	10
95	ICR95T	13,5	18	88	45	12,70	10
120	ICR120T	15	20	106	53	17,80	10
150	ICR150T	16,8	21,3	120	58	23,45	5
185	ICR185T	19	24	110	42	30,52	5
240	ICR240T	21	26	135	55	33,94	5
300	ICR300T	24	30	140	55	47,70	5

Cu - Intercable D standard / Oval „R-series“



Cu-HCP 99,9% / Copper tinned
DIN EN 13600



mm ²	Art. N.	mm					kg (/100)	Pack
		d1	d2	d3	d4	l		
0,5	ICR05OV	1,0	2,0	2,0	3,0	25	0,08	100
1,5	ICR15OV	1,6	3,2	2,6	4,2	25	0,11	100
2,5	ICR20OV	2,1	4,2	3,1	5,2	25	0,14	100
4	ICR40OV	2,5	5,0	3,5	6,0	25	0,16	100
6	ICR60OV	3,0	6,0	5,0	8,0	40	0,65	100
10	ICR100OV	3,9	7,6	5,9	9,6	50	0,96	50

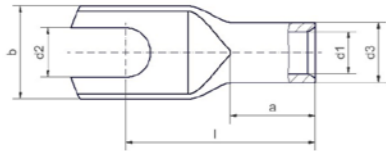
typically used tools: „GENERAL CATALOG TOOLS“



! standard: R-series



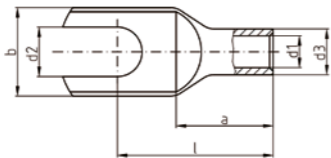
Cu - Intercable IT standard



Cu-HCP 99,9% / Copper tinned
DIN EN 13600

mm ²	Ø mm	Art. N. (inspect. hole: no)	mm						kg (/100)	Pack
			d1	d3	d2	b	l	a		
10	5	CI10-M5-FR	4,3	6,7	5,3	10,0	20,5	10,0	50	
	6	CI10-M6-FR			6,4	11,0	22,5		50	
16	5	CI16-M5-FR	5,4	7,8	5,3	12,0	22,5	11,0	50	
	6	CI16-M6-FR			6,4	12,0	24,5		50	

Cu - Intercable D standard „R-series“



Cu-HCP 99,9% / Copper tinned
DIN EN 13600

mm ²	Ø mm	Art. N. (inspect. hole: no)	mm						kg (/100)	Pack
			d1	d3	d2	b	l	a		
0,5-0,75	3	ICR0753G	1,4	3	3,2	6,5	12,5	6	0,07	50
	4	ICR0754G			4,3	8,5	14		0,07	50
	5	ICR0755G			5,3	10	15		0,08	50
1,0-1,5	3	ICR13G	1,9	3,9	3,2	6,5	13,5	6	0,11	50
	4	ICR14G			4,3	8,5	15		0,12	50
	5	ICR15G			5,3	10	16		0,13	50
2,5	6	ICR16G			6,4	11	18		0,14	50
	4	ICR24G	2,4	4,4	4,3	8,5	15	6,5	0,15	50
	5	ICR25G			5,3	10	16		0,16	50
4	6	ICR26G			6,4	11	18		0,17	50
	8	ICR28G			8,4	13	20		0,20	50
	4	ICR44G	3	5	4,3	8,5	17	8	0,19	50
6	5	ICR45G			5,3	10	18		0,21	50
	6	ICR46G			6,4	11	20		0,22	50
	8	ICR48G			8,4	14	22		0,24	50

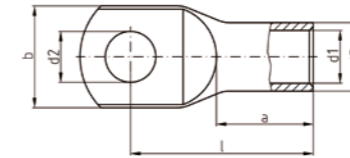
typically used tools: „GENERAL CATALOG TOOLS“



page: 137-141



Ni



Ni (pure nickel)
T 500°C

mm ²	Ø mm	Art. N. (inspect. hole: no)	mm						kg (/100)	Pack
			d1	d3	d2	b	l	a		
0,5-1	3	ICNI13	1,6	3,2	3,2	6,5	12,5	6	0,08	25
	4	ICNI14			4,3	6,5	13,5		0,09	25
	5	ICNI15			5,3	7,5	14,5		0,09	25
1,5-2,5	4	ICNI24	2,3	3,9	4,3	7	14	6	0,12	25
	5	ICNI25			5,3	8,5	15,5		0,13	25
	6	ICNI26			6,4	9,5	17		0,14	25
4-6	4	ICNI64	3,6	5,6	4,3	9,4	18	8	0,26	25
	5	ICNI65			5,3	10	18,5		0,28	25
	6	ICNI66			6,4	10,5	19,5		0,29	25
10	8	ICNI68			8,4	12,5	23,5		0,32	25
	5	ICNI105	4,5	6,5	5,3	10,8	20,5	10	0,34	25
	6	ICNI106			6,4	11,5	22,5		0,37	25
16	8	ICNI108			8,4	13,3	25		0,42	25
	5	ICNI165	5,5	7,5	5,3	12,8	22,5	11	0,44	25
	6	ICNI166			6,4	13,6	24,5		0,48	25
	8	ICNI168			8,4	15,7	26,5		0,54	25

typically used tools: „GENERAL CATALOG TOOLS“



page: 137-141



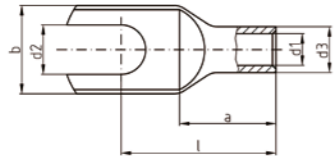
hydraulic tool selection: page: 144



! standard: DIN 46341
DIN 46234

crimping dies: page: 163-184

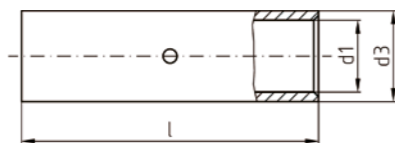
Ni



Ni (pure nickel)
T 500°C

mm ²	Ø mm	Art. N. (inspect. hole: no)	mm						kg (/100)	Pack
			d1	d3	d2	b	l	a		
0,5-1	4	ICNI14G	1,6	3,2	4,3	6,5	13,5	6	0,07	25
	5	ICNI15G			5,3	7,5	14,5		0,08	25
1,5-2,5	4	ICNI24G	2,3	3,9	4,3	7	14	6	0,10	25
	5	ICNI25G			5,3	8,5	15,5		0,11	25
4-6	6	ICNI26G			6,4	9,5	17		0,12	25
	4	ICNI64G	3,6	5,6	4,3	9,4	18	8	0,24	25
10	5	ICNI65G			5,3	10	18,5		0,25	25
	6	ICNI66G			6,4	10,5	19,5		0,25	25
16	8	ICNI68G			8,4	13	23,5		0,40	25
	5	ICNI105G	4,5	6,5	5,3	10,8	20,5	10	0,34	25
10	6	ICNI106G			6,4	11,5	22,5		0,37	25
	8	ICNI108G			8,4	13,3	25		0,41	25
16	5	ICNI165G	5,5	7,5	5,3	12,8	22,5	11	0,44	25
	6	ICNI166G			6,4	13,6	24,5		0,48	25
	8	ICNI168G			8,4	15,7	26,5		0,53	25

Ni



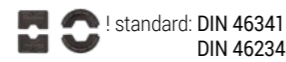
Ni (pure nickel)
T 500°C

mm ²	Art. N.	mm			kg (/100)	Pack
		d1	d3	l		
0,5-1	ICNI1V	1,6	3,2	15	0,09	25
1,5-2,5	ICNI2V	2,3	3,9	15	0,11	25
4-6	ICNI6V	3,6	5,6	15	0,20	25
10	ICNI10V	4,5	6,5	25	0,38	25
16	ICNI16V	5,5	7,5	30	0,54	25

typically used tools: „GENERAL CATALOG TOOLS“

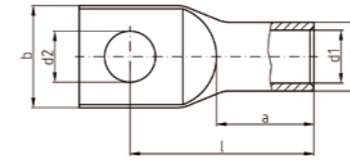


page: 137-141 hydraulic tool selection: page: 144



! standard: DIN 46341
DIN 46234
crimping dies: page: 163-184

Stainless Steel



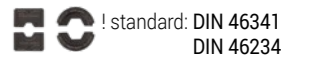
Stainless Steel
V4A
T 400°C
oxidation-safe, food-safe, acid-safe

mm ²	Ø mm	Art. N. (inspect. hole: no)	mm						kg (/100)	Pack
			d1	d3	d2	b	l	a		
1,5-2,5	4	ICVA24	3	5	4,3	9	22,5	8	0,27	25
	5	ICVA25			5,3	9	21,5		0,26	25
4-6	6	ICVA26			6,4	10	20		0,25	25
	4	ICVA64	4	6	4,3	9	23,5	9	0,33	25
10	5	ICVA65			5,3	9	22,5		0,34	25
	6	ICVA66			6,4	10	21		0,33	25
16	5	ICVA105	5	8	5,3	12	29	10	0,81	25
	6	ICVA106			6,4	12	27,5		0,80	25
25	8	ICVA108			8,4	13	25		0,84	25
	5	ICVA165	6	8	5,3	12	33	13	0,64	25
35	6	ICVA166			6,4	12	31,5		0,72	25
	8	ICVA168			8,4	13	31		0,64	25
50	6	ICVA256	7	10	6,4	14	33,5	15	1,26	25
	8	ICVA258			8,4	16	31		1,25	25
70	6	ICVA356	9	12	6,4	18	39,5	17	1,86	10
	8	ICVA358			8,4	18	37		1,81	10
95	10	ICVA3510			10,5	20	36		1,79	10
	12	ICVA5012			13	23	40		2,95	10
16	8	ICVA708	12	16	8,4	24	53	21	4,46	10
	10	ICVA7010			10,5	24	52		4,37	10
25	12	ICVA7012			13	24	50		4,24	10
	16	ICVA7016			17	28	47		4,17	10
35	8	ICVA958	14	18	8,4	26	58	25	5,60	10
	10	ICVA9510			10,5	26	57		5,50	10
50	12	ICVA9512			13	26	55		5,36	10
	16	ICVA9516			17	28	52		5,19	10

typically used tools: „GENERAL CATALOG TOOLS“



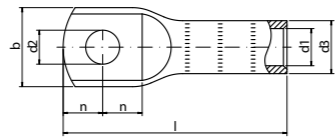
page: 137-141 hydraulic tool selection: page: 144



! standard: DIN 46341
DIN 46234
crimping dies: page: 163-184



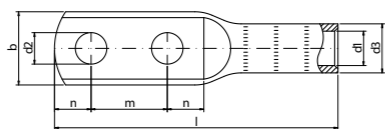
Cu - Medium Voltage Line



Cu-DLP 99,9% / Copper tinned

mm ²	Ø mm	Art. N. (inspect. hole: no)	mm						Pack
			d1	d3	d2	b	n	l	
25	12	CM25M12	7	11	13	20	14	68	50
35	12	CM35M12	8,3	13,8	13	22	14	68	50
50 RC	12	CM50M12	8,7	13,8	13	22	14	71	50
50 S	12	CM50SM12	9,5	14	13	22	14	71	50
70	12	CM70M12	11,5	18	13	26	14	71	25
95 RC	12	CM95M12	12	20	13	30	18	83	25
120÷95 S	12	CM120M12	13,5	20	13	30	18	83	25
150 RC÷120 S÷125 C	12	CM150M12	15	23	13	31	18	86	10
185 RC÷185 S	14	CM185M14	17	23	15	33	18	88	10
240 RC÷185 S	14	CM240M14	19	28	15	38	18	95	10
300 RC÷300 S	14	CM300M14	21,5	30	15	42	18	103	10
300S	14	CM300SM14	24	35	15	48	20	105	5
400 RC	14	CM400M14	27	35	15	51	23	146	5
500 RC	16	CM500M16	30	39	17	56	23	156	5
630 RC	16	CM630M16	34	44	17	62	23	170	5

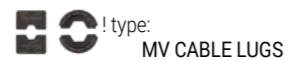
Cu - Medium Voltage Line / double



Cu-DLP 99,9% / Copper tinned

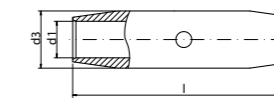
mm ²	Ø mm	Art. N. (inspect. hole: no)	mm							Pack
			d1	d3	d2	b	m	n	l	
25	12	CM25M12DF	7	11	13	20	44,5	14	113	50
35	12	CM35M12DF	8,3	13,8	13	21	44,5	14	113	50
50 RC	12	CM50M12DF	8,7	13,8	13	21	44,5	14	116	50
50 S	12	CM50SM12DF	9,5	14	13	21	44,5	14	116	50
70	12	CM70M12DF	11,5	18	13	26	44,5	14	116	25
95 RC	12	CM95M12DF	12	20	13	27,5	44,5	18	128	25
120÷95 S	12	CM120M12DF	13,5	20	13	28	44,5	18	130	25
150 RC÷120 S÷125 C	12	CM150M12DF	15	23	13	31	44,5	18	133	25
185 RC÷185 S	14	CM185M14DF	17	23	15	33	44,5	18	133	10
240 RC÷185 S	14	CM240M14DF	19	28	15	38	44,5	18	135	10
300 RC÷300 S	14	CM300M14DF	21,5	30	15	42	44,5	18	145	5
300S	14	CM300SM14DF	24	35	15	48	44,5	20	149	5
400 RC	14	CM400M14DF	27	35	15	51	44,5	23	190	5
500 RC	14	CM500M14DF	30	39	15	56	44,5	23	246	5

typically used tools: „GENERAL CATALOG TOOLS“



hydraulic tool selection: page: 144 crimping dies: page: 163-184

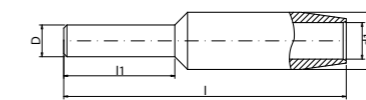
Cu connector - Medium Voltage Line



Cu-DLP 99,9% / Copper tinned

mm ²	Art. N.	mm			Pack
		d1	d3	l	
25	GM25	7	11	60	50
35	GM35	8,3	13,8	60	50
50 RC	GM50	8,7	13,8	60	50
50 S	GM50S	9,5	14	60	50
70	GM70	11,5	18	70	25
95 RC	GM95	12	20	80	25
120÷95 S	GM120	13,5	20	80	10
150 RC÷120 S÷125 C	GM150	15	23	80	10
185 RC÷185 S	GM185	17	23	80	10
240 RC÷185 S	GM240	19	28	100	10
300 RC÷300 S	GM300	21,5	30	100	5
300S	GM300S	24	35	100	5
400 RC	GM400	27	35	100	5
500 RC	GM500	30	39	100	5
630 RC	GM630	34	44	130	5

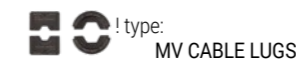
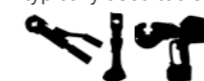
Cu - Medium Voltage Line



Cu-DLP 99,9%

mm ²	Art. N.	mm					Pack
		d1	d3	l1	D	l	
25	CM25P8	7	11	30	8	75	25
35	CM35P8	8,3	13,8	35	8	80	25
50 RC	CM50P8	8,7	13,8	35	8	80	25
50 S	CM50SP8	9,5	14	35	8	80	25
70	CM70P12	11,5	18	35	12	85	25
95 RC	CM95P12	12	20	35	12	95	10
120÷95 S	CM120P12	13,5	20	45	12	105	10
150 RC÷120 S÷125 C	CM150P16	15	23	45	16	110	10
185 RC÷185 S	CM185P16	17	23	45	16	110	10
240 RC÷185 S	CM240P16	19	28	50	16	115	10
300 RC÷300 S	CM300P18	21,5	30	50	18	115	5
300S	CM300SP20	24	35	60	20	130	5

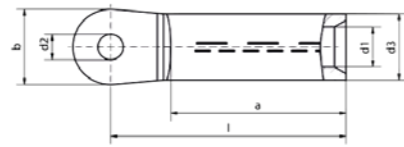
typically used tools: „GENERAL CATALOG TOOLS“



hydraulic tool selection: page: 144 crimping dies: page: 163-184

RC: Rounded Compact Stranded Cable, S: Sectorial Stranded Conductor, C: Sectorial Solid (1 single) Conductor

AI - DIN 46329



Al 99,5%
filled with contact grease / closed
with oil stop
for Al conductors according to DIN EN 60228
and Al ropes according to DIN EN 50182

DIN 46329

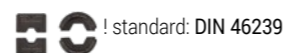
mm ²		Ø mm	Art. N. (blank)	Art. N. (tinned)	Reference	mm						kg (/100)	Pack
RC/S*	C**					d1	d3	d2	b	l	a		
16	25	8	ICAL168LD	ICAL168LDV	12	5,8	12	8,4	20	53	30	1,34	10
		10	ICAL1610LD	ICAL1610LDV				10,5				1,30	10
25	35	8	ICAL258LD	ICAL258LDV	12	6,8	12	8,4	25	53	30	1,40	10
		10	ICAL2510LD	ICAL2510LDV				10,5				1,36	10
		12	ICAL2512LD	ICAL2512LDV				13				1,31	10
35	50	8	ICAL358LD	ICAL358LDV	14	8	14	8,4	25	65	42	2,03	10
		10	ICAL3510LD	ICAL3510LDV				10,5				1,99	10
		12	ICAL3512LD	ICAL3512LDV				13				1,94	10
50	70	8	ICAL508LD	ICAL508LDV	16	9,8	16	8,4	25	65	42	2,59	10
		10	ICAL5010LD	ICAL5010LDV				10,5				2,55	10
		12	ICAL5012LD	ICAL5012LDV				13				2,48	10
70	95	8	ICAL708LD	ICAL708LDV	18	11,2	18	8,4	25	75	52	3,68	10
		10	ICAL7010LD	ICAL7010LDV				10,5				3,63	10
		12	ICAL7012LD	ICAL7012LDV				13				3,56	10
95	120	8	ICAL958LD	ICAL958LDV	22	13,2	22	8,4	25	81	56	5,81	10
		10	ICAL9510LD	ICAL9510LDV				10,5				5,75	10
		12	ICAL9512LD	ICAL9512LDV				13				5,66	10
120	150	10	ICAL12010LD	ICAL12010LDV	22	14,7	23	10,5	30	86	56	6,89	10
		12	ICAL12012LD	ICAL12012LDV				13				6,79	10
		16	ICAL12016LD	ICAL12016LDV				17				5,46	10
150	185	10	ICAL15010LD	ICAL15010LDV	25	16,3	25	10,5	30	90	60	8,74	5
		12	ICAL15012LD	ICAL15012LDV				13				8,62	5
		16	ICAL15016LD	ICAL15016LDV				17				8,39	5
		20	ICAL15020LD	ICAL15020LDV				21				8,09	5
185	240	10	ICAL18510LD	ICAL18510LDV	28	18,3	28,5	10,5	30	91	60	11,00	5
		12	ICAL18512LD	ICAL18512LDV				13				10,89	5
		16	ICAL18516LD	ICAL18516LDV				17				10,48	5
		20	ICAL18520LD	ICAL18520LDV				21				10,18	5
240	300	10	ICAL24010LD	ICAL24010LDV	32	21	32	10,5	38	106	70	16,24	5
		12	ICAL24012LD	ICAL24012LDV				13				16,08	5
		16	ICAL24016LD	ICAL24016LDV				17				15,76	5
		20	ICAL24020LD	ICAL24020LDV				21				15,35	5
300	-	12	ICAL30012LD	ICAL30012LDV	34	23,3	34	13	38	106	70	17,76	1
		16	ICAL30016LD	ICAL30016LDV				17				17,38	1
		20	ICAL30020LD	ICAL30020LDV				21				16,90	1
400	-	12	ICAL40012LD	ICAL40012LDV	38	26	38,5	13	38	116	73	25,98	1
		16	ICAL40016LD	ICAL40016LDV				17				25,57	1
		20	ICAL40020LD	ICAL40020LDV				21				25,05	1
500	-	12	ICAL50012LD	ICAL50012LDV	44	29	44	13	44	122	79	36,04	1
		16	ICAL50016LD	ICAL50016LDV				17				35,60	1
		20	ICAL50020LD	ICAL50020LDV				21				35,04	1

* RC: Rounded Compact Stranded Cable, S: Sectorial Stranded Conductor, ** C: Sectorial Solid (1 single) Conductor

typically used tools: „GENERAL CATALOG TOOLS“

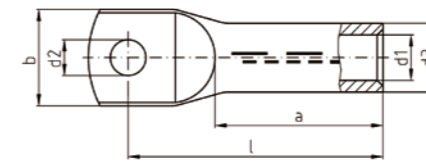


page: 139-141 hydraulic tool selection: page: 144



crimping dies: page: 163-184

AI - DIN 46329



Al 99,5%
filled with contact grease / closed
with oil stop
for Al conductors according to DIN EN 60228 and Al
ropes according to DIN EN 50182

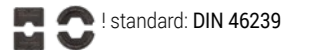
pipe: DIN 46329

mm ²		Ø mm	Art. N. (blank)	Reference	mm						kg (/100)	Pack
RC/S*	C**				d1	d3	d2	b	l	a		
16	25	8	ICAL168	12	5,6	12	8,4	16	52	26	0,94	10
		10	ICAL1610				10,5	18	52		1,01	10
25	35	8	ICAL258	12	7	12	8,4	16	60	34	1,48	10
		10	ICAL2510				10,5	18	60		1,53	10
35	50	8	ICAL358	14	8	14	8,4	20	67	40	2,45	10
		10	ICAL3510				10,5	20	67		2,45	10
		12	ICAL3512				13	20	67		2,35	10
50	70	8	ICAL508	16	10	16	8,4	23	74	42	3,29	10
		10	ICAL5010				10,5	23	74		3,29	10
		12	ICAL5012				13	23	74		3,34	10
70	95	10	ICAL7010	18	11,5	18,5	10,5	28	84	50	4,77	10
		12	ICAL7012				13	28	87		4,73	10
95	120	10	ICAL9510	22	13,4	22	10,5	32	90	55	7,85	10
		12	ICAL9512				13	32	90		7,73	10
		16	ICAL9516				17	32	90		7,96	10
120	150	10	ICAL12010	22	15	23	10,5	32	98	60	8,38	10
		12	ICAL12012				13	32	98		7,91	10
		16	ICAL12016				17	32	98		8,41	10
150	185	10	ICAL15010	25	16,5	25	10,5	35	104	64	10,00	5
		12	ICAL15012				13	35	104		10,03	5
		16	ICAL15016				17	35	104		10,09	5
		20	ICAL15020				21	35	104		10,02	5
185	240	10	ICAL18510	28	18,5	28,5	10,5	40	109	66	13,10	5
		12	ICAL18512				13	40	109		13,39	5
		16	ICAL18516				17	40	109		13,75	5
		20	ICAL18520				21	40	109		13,76	5
240	300	10	ICAL24010	32	21,3	32	10,5	46	119	70	16,04	5
		12	ICAL24012				13	46	119		16,44	5
		16	ICAL24016				17	46	119		17,62	5
		20	ICAL24020				21	46	119		17,90	5
300	-	12	ICAL30012	34	23,3	34	13	50	125	70	18,00	1
		16	ICAL30016				17	50	125		22,10	1
		20	ICAL30020				21	50	125		19,43	1
400	-	12	ICAL40012	38	26	38,5	13	55	120	70	24,40	1
		16	ICAL40016				17	55	120		24,40	1
		20	ICAL40020				21	55	120		24,00	1
500	-	12	ICAL50012	44	29	44	13	63	140	80	38,00	1
		16	ICAL50016				17	63	140		35,50	1
		20	ICAL50020				21	63	140		35,05	1

typically used tools: „GENERAL CATALOG TOOLS“



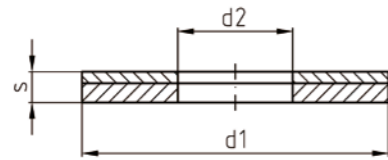
page: 139-141 hydraulic tool selection: page: 144



crimping dies: page: 163-184

* RC: Rounded Compact Stranded Cable, S: Sectorial Stranded Conductor, ** C: Sectorial Solid (1 single) Conductor

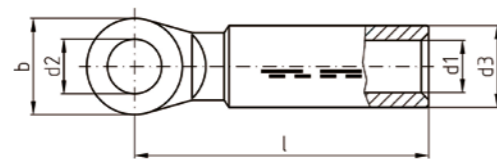
Al-Cu



E / Al
Aluminium sheet plated with copper

Ø mm	Art. N.	mm			kg (/100)	kg (/100) Cu	Pack	for cable lugs max mm ²
		d1	d2	s				
6	ICALCU6CS	16	6,5	1	0,08	0,04	25	120
8	ICALCU8CS	18	8,5	1	0,10	0,04	25	120
10	ICALCU10CS	23	10,5	1	0,15	0,08	25	240
10	ICALCU10CS2	26	11	1	0,20	0,10	25	300
12	ICALCU12CS2	26	13	2	0,28	0,16	25	240
12	ICALCU12CS	30	13	2	0,52	0,24	25	400
12	ICALCU12CS3	46	13	2	1,03	0,46	25	500
16	ICALCU16CS	35	17	2	0,63	0,31	25	500
16	ICALCU16CS2	46	17	2	0,96	0,43	25	630
20	ICALCU20CS	37	21	2	0,60	0,30	25	500
20	ICALCU20CS2	46	21	2	0,88	0,40	25	630

Al-Cu - DIN 46329



Al 99,5%
filled with contact grease / closed
with oil stop
for Al conductors according to DIN EN 60228 and Al ropes
according to DIN EN 50182

pipe: DIN 46329

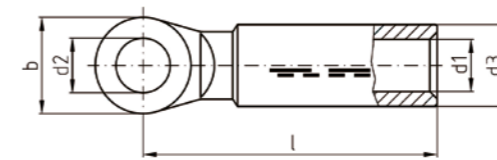
mm ²		Ø mm	Art. N.	Reference	mm					kg (/100)	Pack	
RC/S*	C**				d1	d3	d2	b	l			a
10	-	8	ICALCU108	10	5	10	8,4	20	50	2,71	2,28	10
16	25	8	ICALCU168	12	5,6	12	8,4	20	60	3,54	2,68	10
		10	ICALCU1610				10,5	20	60	3,42	2,56	10
25	35	8	ICALCU258	12	6,8	12	8,4	20	65	3,57	2,68	10
		10	ICALCU2510				10,5	20	65	3,44	2,55	10
		12	ICALCU2512				13	26	67	4,45	3,56	10
35	50	8	ICALCU358	14	8	14	8,4	20	75	4,55	3,17	10
		10	ICALCU3510				10,5	20	75	4,42	3,04	10
		12	ICALCU3512				13	26	75	5,15	3,76	10
50	70	8	ICALCU508	16	9,8	16	8,4	20	75	4,87	3,19	10
		10	ICALCU5010				10,5	20	75	4,72	3,04	10
		12	ICALCU5012				13	26	75	5,95	4,24	10

typically used tools: „GENERAL CATALOG TOOLS“



! standard: DIN 46239

Al-Cu - DIN 46329



Al 99,5%
filled with contact grease / closed
with oil stop
for Al conductors according to DIN EN 60228 and Al ropes
according to DIN EN 50182

pipe: DIN 46329

mm ²		Ø mm	Art. N.	Reference	mm					kg (/100)	Pack	
RC/S*	C**				d1	d3	d2	b	l			a
70	95	10	ICALCU7010	18	11,2	18,5	10,5	26	85	7,37	4,60	10
		12	ICALCU7012				13	26	85	7,12	4,35	10
		16	ICALCU7016				17	30	88	8,10	5,33	10
95	120	10	ICALCU9510	22	13,2	22	10,5	26	86	10,59	5,90	10
		12	ICALCU9512				13	26	86	10,34	5,80	10
		16	ICALCU9516				17	30	88	10,99	6,48	10
120	150	10	ICALCU12010	22	14,7	23	10,5	26	88	10,68	6,64	10
		12	ICALCU12012				13	26	88	10,45	6,41	10
		16	ICALCU12016				17	30	90	11,45	7,41	10
150	185	10	ICALCU15010	25	16,3	25,5	10,5	30	100	13,80	8,31	5
		12	ICALCU15012				13	30	100	13,57	8,07	5
		16	ICALCU15016				17	30	100	12,88	7,18	5
185	240	10	ICALCU18510	28	18,3	28,5	10,5	30	102	17,60	10,30	5
		12	ICALCU18512				13	30	102	17,31	10,00	5
		16	ICALCU18516				17	36	105	19,68	12,40	5
		20	ICALCU18520				21	36	105	18,96	11,68	5
240	300	10	ICALCU24010	32	21,5	32,5	10,5	30	112	20,41	10,00	5
		12	ICALCU24012				13	30	112	20,41	10,00	5
		16	ICALCU24016				17	36	115	22,58	12,00	5
		20	ICALCU24020				21	36	115	21,85	11,28	5
300	-	10	ICALCU30010	34	23,5	34	13	30	115	21,84	10,80	1
		12	ICALCU30012				13	30	115	21,84	10,80	1
		16	ICALCU30016				17	36	116	23,2	12,80	1
		20	ICALCU30020				21	36	116	22,49	12,09	1
400	-	10	ICALCU40010	38	26	38,5	10,5	36	125	32,87	17,67	1
		12	ICALCU40012				13	36	125	33,27	17,39	1
		16	ICALCU40016				17	36	125	31,99	16,79	1
		20	ICALCU40020				21	36	125	31,25	16,05	1
500	-	10	ICALCU50010	44	29	44	10,5	44	140	43,70	21,57	1
		12	ICALCU50012				13	44	140	43,33	21,20	1
		16	ICALCU50016				17	44	140	42,83	20,70	1
		20	ICALCU50020				21	44	140	42,08	19,95	1
625	-	12	ICALCU62512	52	35	52	13	50	177	63,01	21,77	1
		16	ICALCU62516				17	50	177	77,00	35,40	1
		20	ICALCU62520				21	50	177	76,30	34,70	1

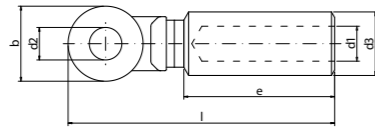
typically used tools: „GENERAL CATALOG TOOLS“



! standard: DIN 46239



Al-Cu / typical: for underground medium voltage cables (acc. to ENEL specs.)

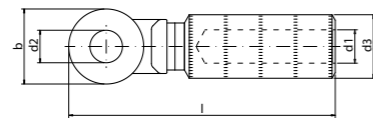


Eye (lug): Cu-ETP 99,95%
Pipe (tube): P-Al 99,%

The tube is filled with grease and closed with plastic cap.

mm ²	Art. N.	mm						Pack
		d1	d3	d2	b	e	l	
25	CALCU25M12	6,5	16	13	24	47,5	87	3/60
35	CALCU35M12D	8	16	13	24	47,5	87	3/60
35	CALCU35M12	8	20	13	24	47,5	87	3/60
50	CALCU50M12	9	20	13	24	47,5	87	3/60
70	CALCU70M12	11	20	13	24	47,5	87	3/60
95	CALCU95M12	12,5	20	13	25	47,5	87	3/60
120	CALCU120M12	13,7	25	13	30	64,5	110	3/30
150	CALCU150M12	15,5	25	13	30	64,5	110	3/30
185	CALCU185M12	17	32	13	35	64,5	117	3/18
240	CALCU240M12	19,5	32	13	35	64,5	117	3/18

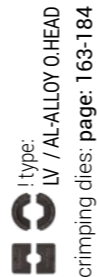
Al-Cu / typical: for low voltage overhead cables (acc. to ENEL specs.)



Eye (lug): Cu-ETP 99,95%
Pipe (tube): P-Al 99,%

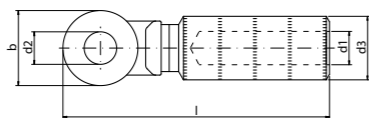
The tube is filled with grease and closed with plastic cap.

mm ²	Art. N.	mm					Pack
		d1	d3	d2	b	l	
35 Al	CALCU35M12CA	8	13	13	24	87	3
54,6 Ald	CALCU54M12CA	10	20	13	24	87	3
70 Al	CALCU70M12CA	10,5	20	13	24	87	3



type: LV / AL-ALLOY O-HEAD
crimping dies: page: 163-184

Al-Cu / typical: for Al-alloy overhead cables/conductors (acc. to ENEL specs.)



Eye (lug): Cu-ETP 99,95%
Pipe (tube): P-Al 99,%

The tube is filled with grease and closed with plastic cap.

mm ²	Art. N.	mm					Pack
		d1	d3	d2	b	l	
35 Ald (7 x 2,52)	CALCU35M12A	8,2	13,5	13	23	89	3
70 Ald (19 x 2,14)	CALCU70M12A	11,2	18	13	23	89	3
150 Al-Acc (7x1,95+26x2,5)	CALCU150M12A	16,5	25	13	33	116	3

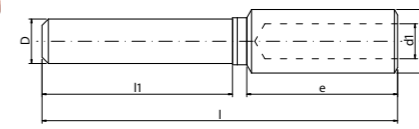
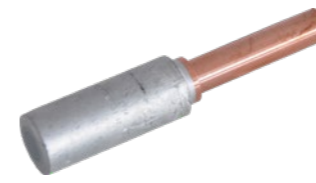
typically used tools: „GENERAL CATALOG TOOLS“



page: 139-141 hydraulic tool selection: page: 144



Al-Cu pin / typical: for underground medium voltage cables (acc. to ENEL specs.)

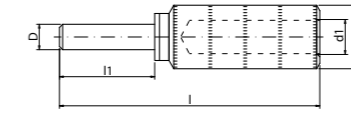


Pin: Cu-ETP 99,95%
Pipe (tube): P-Al 99,%

The tube is filled with grease and closed with plastic cap.

mm ²	Art. N.	mm						Pack
		d1	d3	D	l1	e	l	
25	CALCU25P8	6,5	16	8	30	47,5	82	3/60
35	CALCU35P8D	8	16	8	30	47,5	82	3/60
35	CALCU35P14	8	20	14	60	47,5	112	3/60
50	CALCU50P14	9	20	14	60	47,5	112	3/60
70	CALCU70P14	11	20	14	60	47,5	112	3/60
95	CALCU95P14	12,5	20	14	60	47,5	112	3/60
120	CALCU120P14	13,7	25	14	60	64,5	130	3/30
150	CALCU150P14	15,5	25	14	60	64,5	130	3/30
185	CALCU185P14	17	32	14	60	64,5	130	3/18
240	CALCU240P14	19,5	32	14	60	64,5	130	3/18

Al-Cu pin / typical: for low voltage overhead cables (acc. to ENEL specs.)



Pin: Cu-ETP 99,95%
Pipe (tube): P-Al 99,%

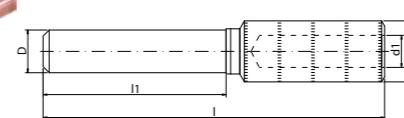
The tube is filled with grease and closed with plastic cap.

mm ²	Art. N.	mm					Pack
		d1	d3	D	l1	l	
35 Al	CALCU35P8CA	8	13	8	30	82	3
54,6 Ald	CALCU54P8CA	10	20	8	30	82	3
70 Al	CALCU70P8CA	10,5	20	8	30	82	3



type: LV / AL-ALLOY O-HEAD
crimping dies: page: 163-184

Al-Cu pin / typical: for Al-alloy overhead cables/conductors (acc. to ENEL specs.)



Pin: Cu-ETP 99,95%
Pipe (tube): P-Al 99,%

The tube is filled with grease and closed with plastic cap.

mm ²	Art. N.	mm					Pack
		d1	d3	D	l1	l	
35 Ald (7 x 2,52)	CALCU35P14A	8,2	13,5	14	80	132	3
70 Ald (19 x 2,14)	CALCU70P14A	11,2	18	14	80	132	3
150 Al-Acc (7x1,95+26x2,5)	CALCU150P14A	16,5	25	14	80	145	3

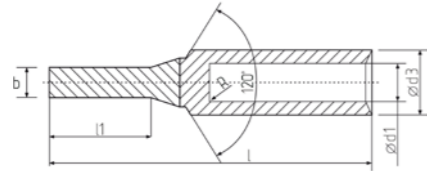
typically used tools: „GENERAL CATALOG TOOLS“



page: 139-141 hydraulic tool selection: page: 144



Al-Cu pin - DIN 46267



Pin: Cu-ETP DIN 13601
Pipe (tube): Al 99,5%
filled with contact grease / closed with oil stop for Al conductors according to DIN EN 60228 and Al ropes according to DIN EN 50182
DIN 46267 p. 2

mm ²		ø mm	Art. N.	Reference	mm					kg (/100)	kg (/100) Cu	Pack
RC/S*	C**				d1	d3	b	l1	l			
16	25	6	ICALCU16B6V	12	5,6	12	6	20	58	1,45	0,68	10
25	35	6	ICALCU25B6V	12	6,8	12	6	20	58	1,49	0,69	10
35	50	7	ICALCU35B7V	14	8	14	7	22	71	2,34	1,03	10
50	70	8	ICALCU50B8V	16	9,8	16	8	25	74	3,27	1,60	10
70	95	10	ICALCU70B10V	18	11,2	18,5	10	30	87	5,53	2,77	10
95	120	12	ICALCU95B12V	22	13,2	22	12	33	91	8,16	4,36	10
120	150	12	ICALCU120B12V	22	14,7	23	12	38	97	9,40	5,14	10
150	185	12	ICALCU150B12V	25	16,3	25	12	38	108	11,43	5,61	5
185	240	14	ICALCU185B14V	28	18,3	28,5	14	44	116	16,29	8,71	5
240	300	16	ICALCU240B16V	32	21	32	16	44	128	22,30	11,43	5
300	-	18	ICALCU300B18V	34	23,3	34	18	46	131	26,00	14,37	1

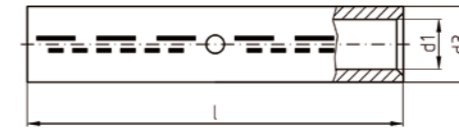
* RC: Rounded Compact Stranded Cable, S: Sectorial Stranded Conductor, ** C: Sectorial Solid (1 single) Conductor

typically used tools: „GENERAL CATALOG TOOLS“



! standard: DIN 46267
Al
crimping dies: page: 163-184

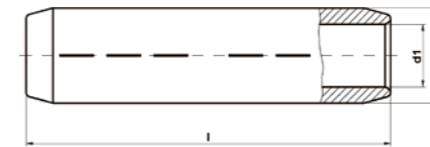
Al connector - DIN 46267



Al 99,5% filled with contact grease / closed with oil stop for Al conductors according to DIN EN 60228 and Al ropes according to DIN EN 50182
DIN 46267 p. 2

mm ²		Art. N.	Reference	mm			kg (/100)	Pack
RC/S*	C**			d1	d3	l		
16	25	ICAL16V	12	5,6	12	55	0,92	10
25	35	ICAL25V	12	7	12	70	1,78	10
35	50	ICAL35V	14	8	14	85	2,85	10
50	70	ICAL50V	16	10	16	85	3,61	10
70	95	ICAL70V	18	11,5	18,5	105	5,59	10
95	120	ICAL95V	22	13,4	22	105	8,50	10
120	150	ICAL120V	22	15	23	105	8,48	10
150	185	ICAL150V	25	16,5	25	125	11,13	5
185	240	ICAL185V	28	18,5	28,5	125	14,35	5
240	300	ICAL240V	32	21,3	32	145	19,17	5
300	-	ICAL300V	34	23,3	34	145	22,71	1
400	-	ICAL400V	38	26	38,5	210	35,90	1
500	-	ICAL500V	44	29	44	210	48,80	1

Al connector - DIN 46267 / 10-30 kV

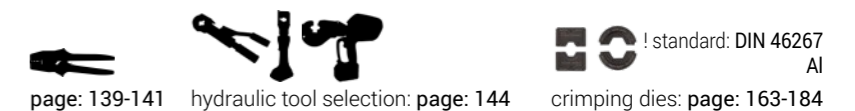


Al 99,5% filled with contact grease / closed with oil stop for Al conductors according to DIN EN 60228 and Al ropes according to DIN EN 50182
DIN 46267 p. 2

mm ²		Art. N.	Reference	mm			kg (/100)	Pack
RC/S*	C**			d1	d3	l		
95	120	ICAL95V30	22	13,4	22	100	6,30	10
120	150	ICAL120V30	22	15	23	105	6,50	10
150	185	ICAL150V30	25	16,5	25	105	7,50	5
185	240	ICAL185V30	28	18,5	28,5	125	12,00	5
240	300	ICAL240V30	32	21,3	32	125	14,40	5
300	-	ICAL300V30	34	23,3	34	125	13,70	1
400	-	ICAL400V30	38	26	38,5	150	24,80	1
500	-	ICAL500V30	44	29	44	170	38,00	1
625	-	ICAL625V30	52	35	52	200	60,20	1
800	-	ICAL800V30	58	40	58	235	87,50	1
1000	-	ICAL1000V30	60	44	60	235	82,50	1

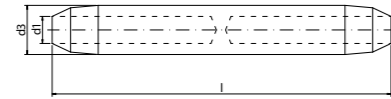
* RC: Rounded Compact Stranded Cable, S: Sectorial Stranded Conductor, ** C: Sectorial Solid (1 single) Conductor

typically used tools: „GENERAL CATALOG TOOLS“



! standard: DIN 46267
Al
crimping dies: page: 163-184

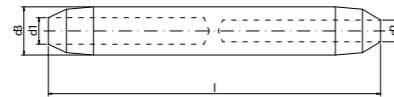
Al connector / typical: for underground medium voltage cables



P-Al 99,5%
 The tube is filled with grease and closed with plastic cap.

mm ²	Art. N.	mm			Pack
		d1	d3	l	
35	GALM35	8	20	138	3/30
50	GALM50	9	20	138	3/30
70	GALM70	11	20	138	3/30
95	GALM95	12,5	20	138	3/30
120	GALM120	13,7	25	164	3/24
150	GALM150	15,5	25	164	3/24
185	GALM185	17	32	176	3/15
240	GALM240	19,5	32	176	3/15

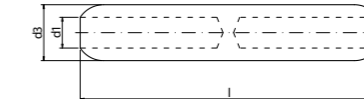
Al reduction connector / typical: for underground medium voltage cables Al -> Al/Cu



P-Al 99,5%
 The tube is filled with grease and closed with plastic cap.

mm ²		Art. N.	mm				Pack
Al	Al/Cu		d1	d2	d3	l	
70	50	GALM7050	11	9	20	138	3/30
95	50	GALM9550	12,5	9	20	138	3/30
	70	GALM9570	12,5	11	20	138	3/30
120	95	GALM12095	13,7	12,5	25	164	3/24
150	95	GALM15095	15,5	12,5	25	164	3/24
	120	GALM150120	15,5	13,7	25	164	3/24
185	50	GALM18550	17	9	32	176	3/15
	95	GALM18595	17	12,5	32	176	3/15
	150	GALM185150	17	15,5	32	176	3/15
240	150	GALM240150	19,5	15,5	32	176	3/15
	185	GALM240185	19,5	17	32	176	3/15

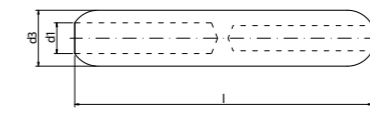
Al connector / multi-voltage



P-Al 99,5%
 The tube is filled with grease and closed with plastic cap.

mm ²	Art. N.	mm			Pack
		d1	d3	l	
16	GALMB16	5,5	16	90,5	3/30
25	GALMB25	6,5	16	90,5	3/30
35	GALMB35D	8	16	90,5	3/30
35	GALMB35	8	20	106,5	3/30
50	GALMB50	9	20	106,5	3/30
70	GALMB70	11	20	106,5	3/30
95	GALMB95	12,5	20	110	3/30
120	GALMB120	13,7	25	133	3/24
150	GALMB150	15,5	25	135	3/24
185	GALMB185	17	32	143,5	3/15
240	GALMB240	19,5	32	143,5	3/15

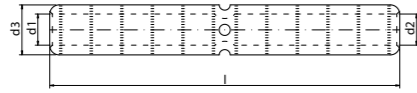
Al reduction connector / multi-voltage Al -> Al/Cu



P-Al 99,5%
 The tube is filled with grease and closed with plastic cap.

mm ²		Art. N.	mm				Pack
Al	Al/Cu		d1	d2	d3	l	
25	16	GALMB2516	6,5	5,5	16	90,5	3/30
50	25	GALMB5025	9	6,5	20	106,5	3/30
	35	GALMB5035	9	8	20	106,5	3/30
70	35	GALMB7035	11	8	20	106,5	3/30
	50	GALMB7050	11	9	20	106,5	3/30
95	50	GALMB9550	12,5	9	20	110	3/30
	70	GALMB9570	12,5	11	20	110	3/30
120	70	GALMB12070	13,7	11	25	133	3/24
	95	GALMB12095	13,7	12,5	25	133	3/24
150	70	GALMB15070	15,5	11	25	135	3/24
	95	GALMB15095	15,5	12,5	25	135	3/24
	120	GALMB150120	15,5	13,7	25	135	3/24
185	95	GALMB18595	17	12,5	32	143,5	3/15
	120	GALMB185120	17	13,7	32	143,5	3/15
	150	GALMB185150	17	15,5	32	143,5	3/15
240	150	GALMB240150	19,5	15,5	32	143,5	3/15
	185	GALMB240185	19,5	17	32	143,5	3/15

Al reduction connector Al -> Al/Cu / typical: for low voltage overhead cables



P-Al 99,5%
The tube is filled with grease and closed with plastic cap.

mm ²		Art. N.	mm				Pack
Al	Al/Cu		d1	d2	d3	l	
35 Al	25 Cu	GAL3525CA	8	13	6,5	105	3
	35 Al	GAL35CA	8	13	8	105	3
70 Al	35 Al	GAL7035CA	10,5	20	8	105	3
	50 Cu	GAL7050CA	10,5	20	9	105	3
	70 Al	GAL70CA	10,5	20	10,5	105	3
54,6 Ald	25 Cu	GAL5425CA	10	20	6,5	105	3

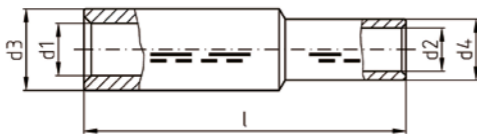
typically used tools: „GENERAL CATALOG TOOLS“



! standard:
LV OVERHEAD

page: 139-141 hydraulic tool selection: page: 144 crimping dies: page: 163-184

Al-Cu connector - DIN 46267



Al 99,5%
Cu-ETP DIN 13601
filled with contact grease / closed with oil stop
for Al conductors according to DIN EN 60228 and Al ropes according to DIN EN 50182

DIN 46267 p. 1, 2

mm ²			Art. N.	Reference	mm					kg (/100)	kg (/100) Cu	Pack
Al RC/S*	Al C**	Cu RC/S*			d1	d3	d2	d4	l			
25	35	10	ICALCU2510V	AI 12 / CU 6	6,8	12	4,4	6	51	0,99	0,23	10
		16	ICALCU2516V	AI 12 / CU 8			5,5	8,5	61	1,61	0,84	10
		25	ICALCU2525V	AI 12 / CU 10			7	10	62	1,91	1,13	10
35	50	16	ICALCU3516V	AI 14 / CU 8	8	14	5,5	8,5	71	2,12	0,89	10
		25	ICALCU3525V	AI 14 / CU 10			7	10	71	2,41	1,13	10
		35	ICALCU3535V	AI 14 / CU 12			8,2	12,2	70	2,98	1,71	10
50	70	16	ICALCU5016V	AI 16 / CU 8	9,8	16	5,5	8,5	71,5	2,48	0,90	10
		25	ICALCU5025V	AI 16 / CU 10			7	10	71,5	2,66	1,03	10
		35	ICALCU5035V	AI 16 / CU 12			8,2	12,2	71,5	3,34	1,71	10
70	95	50	ICALCU5050V	AI 16 / CU 14			10	14,5	77	4,35	2,65	10
		25	ICALCU7025V	AI 18 / CU 10	11,2	18,5	7	10	79	3,62	1,06	10
		35	ICALCU7035V	AI 18 / CU 12			8,2	12,2	79	4,22	1,55	10
		50	ICALCU7050V	AI 18 / CU 14			10	14,5	85	5,33	2,65	10
		70	ICALCU7070V	AI 18 / CU 16			11,5	16,5	88	6,40	3,67	10

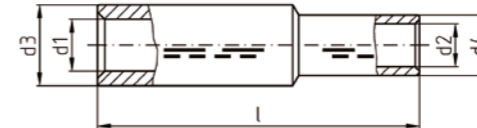
typically used tools: „GENERAL CATALOG TOOLS“



! standard: DIN 46267
Al

page: 139-141 hydraulic tool selection: page: 144 crimping dies: page: 163-184

Al-Cu connector - DIN 46267



Al 99,5%
Cu-ETP DIN 13601
filled with contact grease / closed with oil stop
for Al conductors according to DIN EN 60228 and Al ropes according to DIN EN 50182
DIN 46267 p. 1, 2

mm ²			Art. N.	Reference	mm					kg (/100)	kg (/100) Cu	Pack
Al RC/S*	Al C**	Cu RC/S*			d1	d3	d2	d4	l			
95	120	35	ICALCU9535V	AI 22 / CU 12	13,2	22	8,2	12,2	79	5,74	1,66	10
		50	ICALCU9550V	AI 22 / CU 14			10	14,5	85	6,91	2,65	10
		70	ICALCU9570V	AI 22 / CU 16			11,5	16,5	87	7,89	3,68	10
120	150	95	ICALCU9595V	AI 22 / CU 18			13,5	19	94	9,88	5,62	10
		50	ICALCU12050V	AI 22 / CU 14	14,7	23	10	14,5	87	6,65	2,73	10
		70	ICALCU12070V	AI 22 / CU 16			11,5	16,5	89	7,61	3,58	10
150	185	95	ICALCU12095V	AI 22 / CU 18			13,5	19	97	9,77	5,62	10
		120	ICALCU120120V	AI 22 / CU 20			15,5	21	98	10,82	6,61	10
		70	ICALCU15070V	AI 25 / CU 16	16,3	25	11,5	16,5	101	9,59	3,58	5
185	240	95	ICALCU15095V	AI 25 / CU 18			13,5	19	108	11,66	5,62	5
		120	ICALCU150120V	AI 25 / CU 20			15,5	21	108	12,59	6,61	5
		150	ICALCU150150V	AI 25 / CU 22			17	23,5	113	15,50	9,46	5
240	300	95	ICALCU18595V	AI 28 / CU 18	18,3	28,5	13,5	19	108	13,00	5,62	5
		120	ICALCU185120V	AI 28 / CU 20			15,5	21	108	14,01	6,61	5
		150	ICALCU185150V	AI 28 / CU 22			17	23,5	113	16,93	9,47	5
300	-	185	ICALCU185185V	AI 28 / CU 25			19	25,5	116	18,53	10,97	5
		120	ICALCU240120V	AI 32 / CU 20	21	32	15,5	21	120	17,36	6,60	5
		150	ICALCU240150V	AI 32 / CU 22			17	23,5	124	20,08	9,27	5
400	-	185	ICALCU240185V	AI 32 / CU 25			19	25,5	127	21,84	10,97	5
		240	ICALCU240240V	AI 32 / CU 28			21,5	29	128	25,85	14,89	5
		150	ICALCU300150V	AI 34 / CU 22	23,3	34	17	23,5	124	20,51	9,27	1
500	-	185	ICALCU300185V	AI 34 / CU 25			19	25,5	128	22,58	11,19	1
		240	ICALCU300240V	AI 34 / CU 28			21,5	29	128	25,63	13,71	1
		300	ICALCU300300V	AI 34 / CU 32			24,5	32	138	30,56	18,58	1
400	-	185	ICALCU400185V	AI 38 / CU 25	26	38,5	19	25,5	131	26,70	11,20	1
		240	ICALCU400240V	AI 38 / CU 28			21,5	29	129	29,30	13,70	1
		300	ICALCU400300V	AI 38 / CU 32			24,5	32	139	34,30	18,60	1
500	-	240	ICALCU500240V	AI 44 / CU 28	29	44	21,5	29	139	36,66	13,71	1
		300	ICALCU500300V	AI 44 / CU 32			24,5	32	149	41,73	18,58	1
		400	ICALCU500400V	AI 44 / CU 38			27,5	38,5	168	62,24	41,10	1

typically used tools: „GENERAL CATALOG TOOLS“



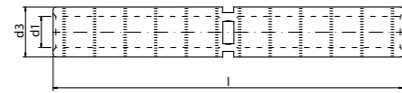
! standard: DIN 46267
Al

page: 139-141 hydraulic tool selection: page: 144 crimping dies: page: 163-184

Al / Al-Cu
Low - Medium Voltage
 TUBULAR CABLE LUGS & CONNECTORS

Cu
Low - Medium Voltage

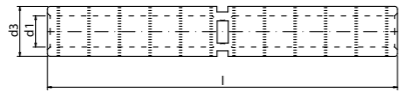
Al connector, full tension / for LV overhead cables



P-Al 99,5%
 The tube is filled with grease and closed with plastic cap.

mm ²	Art. N.	mm			Pack
		d1	d3	l	
35 Al	GAL35PT	8	13	95	3
54,6 Aldr.	GAL54PT	10	16	110	3
70 Al	GAL70PT	10,5	20	155	3

Cu connector, full tension / for LV overhead cables



Cu-ETP 99,95%
 The tube is filled with grease and closed with plastic cap.

mm ²	Art. N.	mm			Pack
		d1	d3	l	
10 Cu	GCU10PT	5	8,5	51	10
16 Cu	GCU16PT	5	8,5	61	10
25 Cu	GCU25PT	7	11	81	10
35 Cu	GCU35PT	8,3	13,8	92	10
70 Cu	GCU70PT	11,5	18	119	10

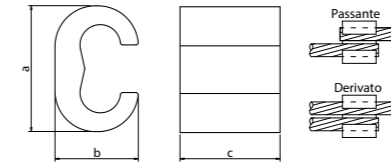
typically used tools: „GENERAL CATALOG TOOLS“



page: 139-141 hydraulic tool selection: page: 144

! type: LV O.HEAD / FULL TENS.
 crimping dies: page: 163-184

Cu - „C“ derivation connector



Cu-ETP 99,95%

mm ²		Art. N.	mm			Pack
Pass.	Derivative		a	b	c	
6÷2,5	6÷1,5	DAC6	10	6,5	7,5	100
10	10÷1,5	DAC10	12	8	12	100
16	16÷1,5	DAC16	19,5	12	17,5	100
25	25÷16	DAC25	20,5	12	17,5	50
35	16÷1,5	DAC3516	25	15,5	21,5	50
35	35÷25	DAC35	26,5	15,5	21,5	50
50	25÷6	DAC5025	34	22	28	25
70÷50	35÷6	DAC7035	34	22	28	25
70÷50	70÷35	DAC70	34	22	28	25
95	35÷6	DAC9535	41	23,5	30	25
95	70÷35	DAC9570	41	23,5	30	25
95	95	DAC95	41	23,5	30	25
120	120÷25	DAC120	44,5	27,5	30	10
150	120÷25	DAC150120	45,5	27,5	30	10
185÷150	95÷16	DAC18595	44,5	27,5	30	10
185	185	DAC185	45,5	27,5	40	10



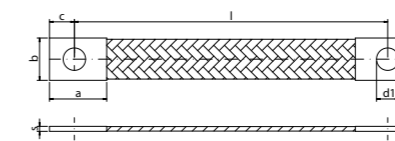
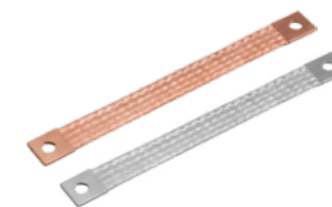
! type: C-CLAMP

typically used tools: „GENERAL CATALOG TOOLS“

hydraulic tool selection: page: 144

crimping dies: page: 163-184

Cu - flexible band

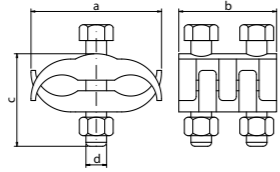


terminals: Cu-ETP UNI EN 1652
 wires: Cu-ETP UNI EN 13602

mm ²	Art. N.		mm						Pack
	Copper	Tinned Copper	a	b	c	d1	s	l	
10	TRF10-150	TRF10-150T	23	17	10	9	2,0	150	25
	TRF10-200	TRF10-200T	23	17	10	9	2,0	200	25
	TRF10-250	TRF10-250T	23	17	10	9	2,0	250	25
16	TRF16-150	TRF16-150T	23	17	10	9	2,5	150	25
	TRF16-200	TRF16-200T	23	17	10	9	2,5	200	25
	TRF16-250	TRF16-250T	23	17	10	9	2,5	250	25
	TRF16-300	TRF16-300T	23	17	10	9	2,5	300	25
	TRF16-350	TRF16-350T	23	17	10	9	2,5	350	25
	TRF16-420	TRF16-420T	23	17	10	9	2,5	420	25
	TRF16-570	TRF16-570T	23	17	10	9	2,5	570	25
	TRF16-660	TRF16-660T	23	17	10	9	2,5	660	25
	TRF16-700	TRF16-700T	23	17	10	9	2,5	700	25
25	TRF25-150	TRF25-150T	23	23	10	9	3,2	150	25
	TRF25-200	TRF25-200T	23	23	10	9	3,2	200	25
	TRF25-250	TRF25-250T	23	23	10	9	3,2	250	25
	TRF25-300	TRF25-300T	23	23	10	9	3,2	300	25

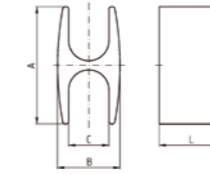
Cu
Low - Medium Voltage

Cu
Low - Medium Voltage



body: OT 58 UNI 5705/65
screws: Fe UNI 5739 - DIN 933
bolts: Fe UNI 5588 - DIN 934

mm ²	Art. N.	mm				Pack
		a	b	c	d	
4÷25	MBO1B425	22	18	25	1xM6	50
10÷50	MBO1B1050	29	28	25	1xM6	50
10÷50	MBO2B1050	29	22	25	2xM6	50
15÷95	MBO2B1595	36	30	35	2xM6	25
30÷150	MBO2B3015	38	37	45	2xM8	10
150÷200	MBO2B1520	55	58	50	3xM12	5
200÷300	MBO3B2030	65	60	60	3xM12	5



Cu-ETP (DIN EN 13600)
For Cu ropes according to DIN 48201

mm ²		Art. N. (tinned)	mm				kg (/100)	Pack	Art. N. (blank, no tin)
1	2		A	B	C	L			
70	70	ICD7070H	34	17	10,8	28	6,22	5	ICD7070HBK
95	95	ICD9595H	40	22	13	30	9,76	5	ICD9595HBK
120	120	ICD120120H	45	24	15,5	25	10,24	5	ICD120120HBK

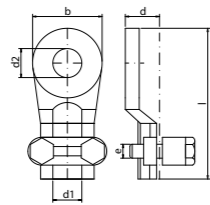


! type: H BRANCH

typically used tools: „GENERAL CATALOG TOOLS”

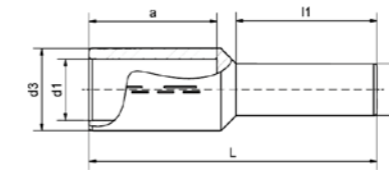
hydraulic tool selection: page: 144

crimping dies: page: 163-184



body: OT 58 UNI 5705/65
screws: Fe UNI 5739 - DIN 933

mm ²	Art. N.	mm						Pack
		d1	d2	b	d	l	e	
16	CO2B16	4,1÷5,2	8,4	15	9,5	34,5	M5	50
25	CO2B25	5,2÷6,5	8,4	18	11,5	41	M5	50
35	CO2B35	6,5÷7,7	10,5	21	12,5	47,5	M5	50



Cu-HCP tinned
DIN 46235
(pipe)

mm ²	ID	Art.N.	mm						kg (/100)	Pack
			d1	d3	D	L	l1	a		
120	20	ICD120B13V	15,5	21	13	79	38	35	10,60	10
150	22	ICD150B14V	17	23,5	14	79	38	35	13,30	10
185	25	ICD185B16V	19	25,5	16	90	44	40	17,65	5
240	28	ICD240B18V	21,5	29	18	90	44	40	23,00	5

typically used tools: „GENERAL CATALOG TOOLS”

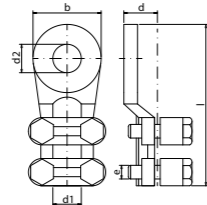


page: 139-141

hydraulic tool selection: page: 144

! standard: DIN 46235

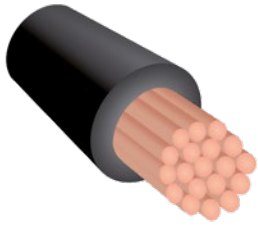
crimping dies: page: 163-184



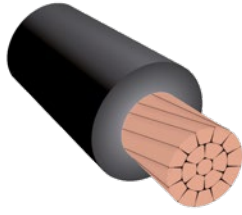
body: OT 58 UNI 5705/65
screws: Fe UNI 5739 - DIN 933

mm ²	Art.N.	mm						Pack
		d1	d2	b	d	l	e	
50	CO4B50	7,7÷9,3	10,5	22	14,5	56	M6	25
75	CO4B75	9,3÷11	13	28	16	66	M6	25
100	CO4B100	11÷12,8	13	30	16	69	M6	25
120	CO4B120	12,8÷14,5	13	32	16	74	M6	25
170	CO4B170	14,5÷16,8	15	35	16	80,5	M8	25
200	CO4B200	16,8÷18	16	38	22	87	M8	25
250	CO4B250	18÷20,5	17	42	22	91	M8	25
300	CO4B300	20,5÷22	17	45	22	105	M10	20
400/500	CO4B400	22÷25	21	54	24	124	M10	10

4 conductors



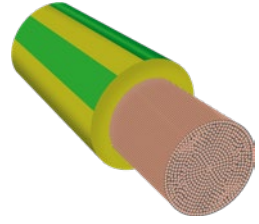
rigid conductor



compact rigid conductor



flexible conductor class 5



flexible compact conductor

1 system



+



=



i- crimping

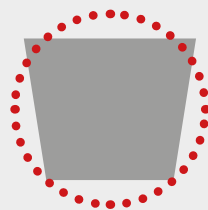
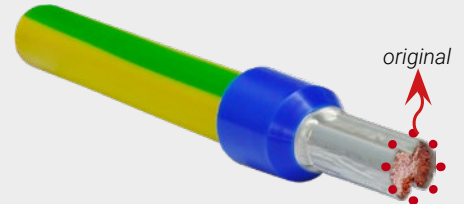
*i*ntelligent crimping



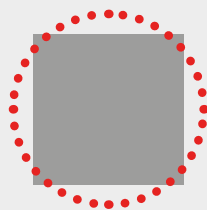
+



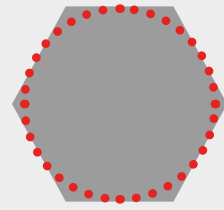
=



trapezoid



square



hexagonal



*i*ntelligent